



zegami

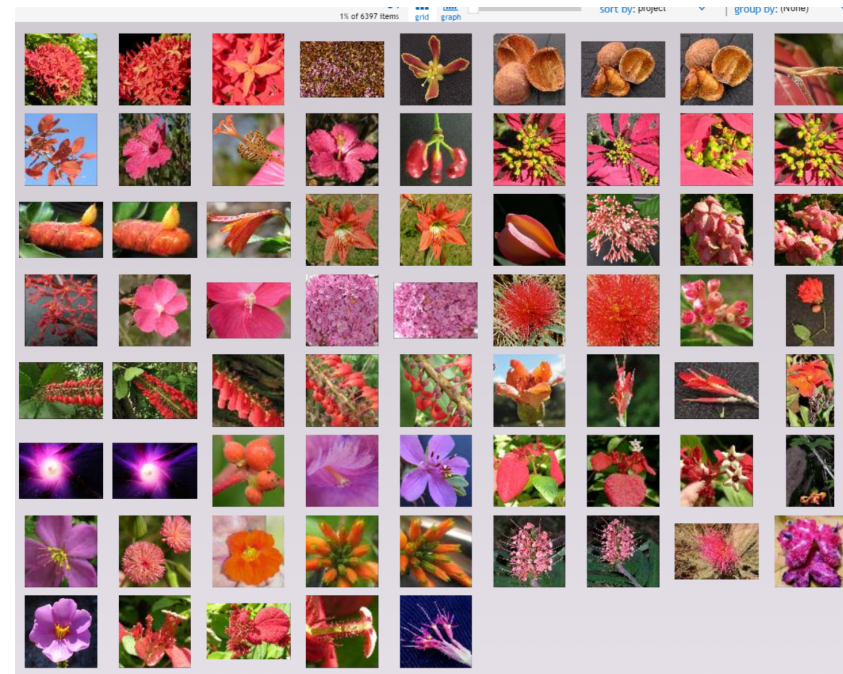
Stephen Taylor
University of Oxford

zegami.com

The problem

High throughput imaging and analysis generates lots of metadata...

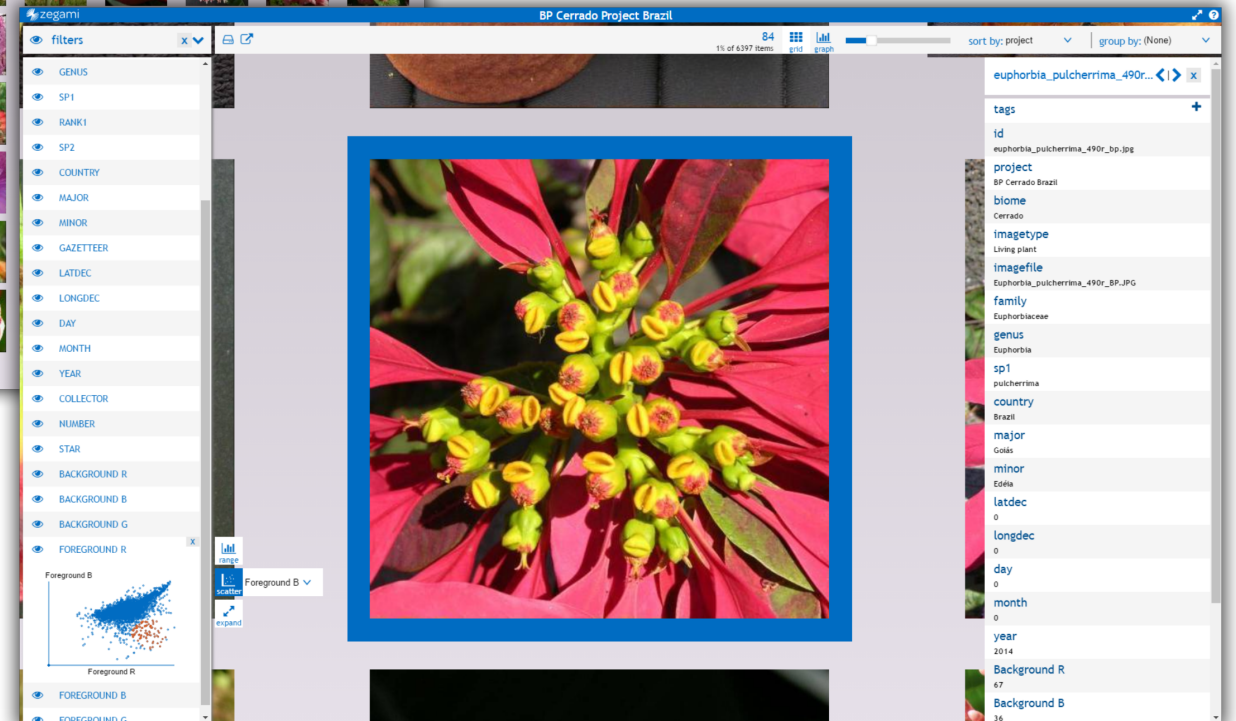
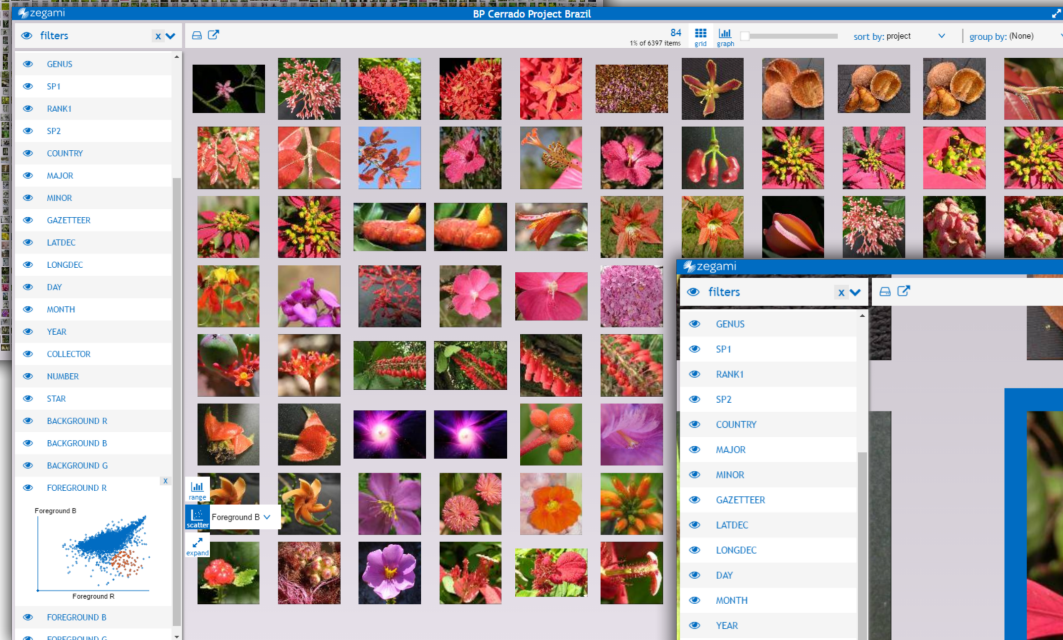
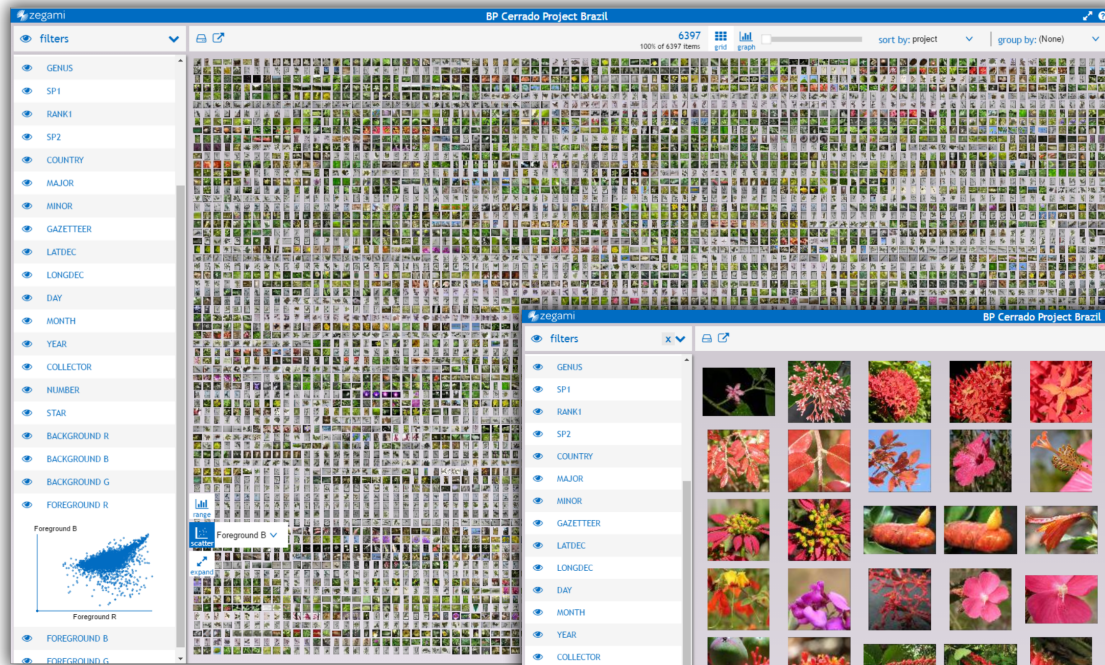
id	project	biome	imagetype	imagefile	family	genus	sp1	rank1	sp2	country	major	minor	gazetteer	latdec	longdec	day	month	year
ve6M001.jpg	BP Cerrado Brazil	Cerrado	Specimen	ve6M001.jpg	Melastomataceae	Conoclinium	lanceiflorum	mill	mill	Brazil	Goiás	Edraia	mill	-17.688347	-50.084456	3	8	2012
ve6M002.jpg	BP Cerrado Brazil	Cerrado	Specimen	ve6M002.jpg	Cactaceae	Cereus	mill	mill	mill	Brazil	Goiás	Edraia	mill	-17.688347	-50.084456	3	8	2012
ve6M003.jpg	BP Cerrado Brazil	Cerrado	Specimen	ve6M003.jpg	Piperaceae	Piper	fuliginosum	mill	mill	Brazil	Goiás	Edraia	mill	-17.688347	-50.084456	3	8	2012
ve6M004.jpg	BP Cerrado Brazil	Cerrado	Specimen	ve6M004.jpg	Melastomataceae	Rhyssanthus	grandiflorum	mill	mill	Brazil	Goiás	Edraia	mill	-17.688347	-50.084456	3	8	2012
ve6M005.jpg	BP Cerrado Brazil	Cerrado	Specimen	ve6M005.jpg	Myrtaceae	Blepharocalyx	saticifolius	mill	mill	Brazil	Goiás	Edraia	mill	-17.688347	-50.084456	3	8	2012
ve6M006.jpg	BP Cerrado Brazil	Cerrado	Specimen	ve6M006.jpg	Costaceae	Costus	spiralis	mill	mill	Brazil	Goiás	Edraia	mill	-17.688347	-50.084456	3	8	2012
ve6M007.jpg	BP Cerrado Brazil	Cerrado	Specimen	ve6M007.jpg	Primulaceae	Myrsine	umbellata	mill	mill	Brazil	Goiás	Edraia	mill	-17.688347	-50.084456	3	8	2012
ve6M008.jpg	BP Cerrado Brazil	Cerrado	Specimen	ve6M008.jpg	Anacardiaceae	Tapiraia	gouanensis	mill	mill	Brazil	Goiás	Edraia	mill	-17.688347	-50.084456	3	8	2012
ve6M009.jpg	BP Cerrado Brazil	Cerrado	Specimen	ve6M009.jpg	Asteraceae	Veronicastrum	brasiliana	mill	mill	Brazil	Goiás	Edraia	mill	-17.688347	-50.084456	3	8	2012
ve6M010.jpg	BP Cerrado Brazil	Cerrado	Specimen	ve6M010.jpg	Moraceae	Ficus	angustifolia	mill	mill	Brazil	Goiás	Edraia	mill	-17.688347	-50.084456	3	8	2012
ve6M011.jpg	BP Cerrado Brazil	Cerrado	Specimen	ve6M011.jpg	Malvaceae	Byttneria	rimoussumana	mill	mill	Brazil	Goiás	Edraia	mill	-17.688347	-50.084456	3	8	2012
ve6M012.jpg	BP Cerrado Brazil	Cerrado	Specimen	ve6M012.jpg	Cyperaceae	Eleocharis	mill	mill	mill	Brazil	Goiás	Edraia	mill	-17.688347	-50.084456	3	8	2012
ve6M013.jpg	BP Cerrado Brazil	Cerrado	Specimen	ve6M013.jpg	Cyperaceae	Eleocharis	mill	mill	mill	Brazil	Goiás	Edraia	mill	-17.688347	-50.084456	3	8	2012
ve6M014.jpg	BP Cerrado Brazil	Cerrado	Specimen	ve6M014.jpg	Poaceae	Arundinella	hispidula	mill	mill	Brazil	Goiás	Edraia	mill	-17.688347	-50.084456	3	8	2012
ve6M015.jpg	BP Cerrado Brazil	Cerrado	Specimen	ve6M015.jpg	Poaceae	Melinis	minutiflora	mill	mill	Brazil	Goiás	Edraia	mill	-17.688347	-50.084456	3	8	2012
ve6M016.jpg	BP Cerrado Brazil	Cerrado	Specimen	ve6M016.jpg	Hydroclaseae	Hydroclis	spinosa	mill	mill	Brazil	Goiás	Edraia	mill	-17.688347	-50.084456	3	8	2012
ve6M017.jpg	BP Cerrado Brazil	Cerrado	Specimen	ve6M017.jpg	Onagraceae	Ludwigia	serotina	mill	mill	Brazil	Goiás	Edraia	mill	-17.688347	-50.084456	3	8	2012
ve6M018.jpg	BP Cerrado Brazil	Cerrado	Specimen	ve6M018.jpg	Orchidaceae	Euclydia	mill	mill	mill	Brazil	Goiás	Edraia	mill	-17.688347	-50.084456	3	8	2012
ve6M019.jpg	BP Cerrado Brazil	Cerrado	Specimen	ve6M019.jpg	Fabaceae	Mimosa	sonniana	var	laucarpa	Brazil	Goiás	Edraia	mill	-17.688347	-50.084456	3	8	2012



- How to resolve the disconnect between data and images?
- How to verify the metadata is correct?
- How to look for trends?
- How to make access simple?



Visualise, query, sort and filter thousands of images and metadata from within your browser.



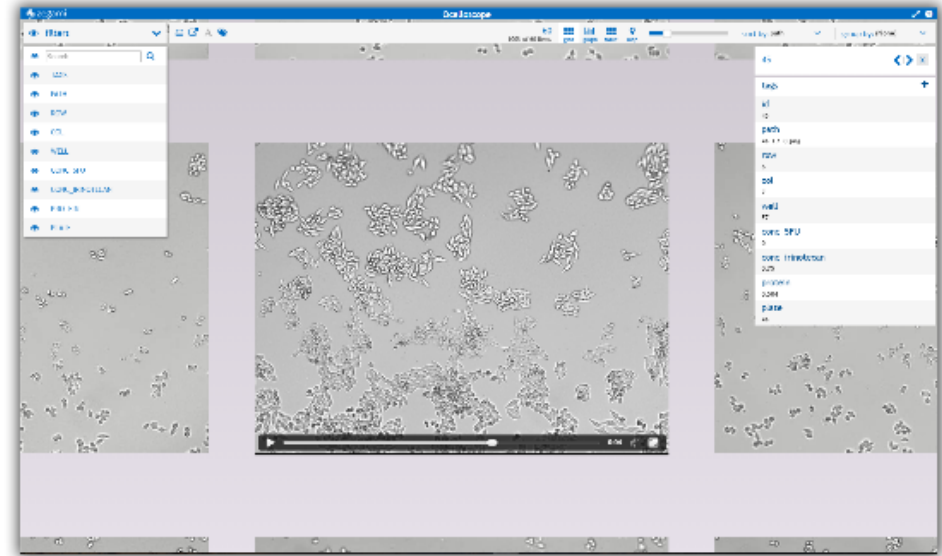
Responsive and easy to use zoomable HTML5 interface

Create a Zegami UI to query your data very quickly

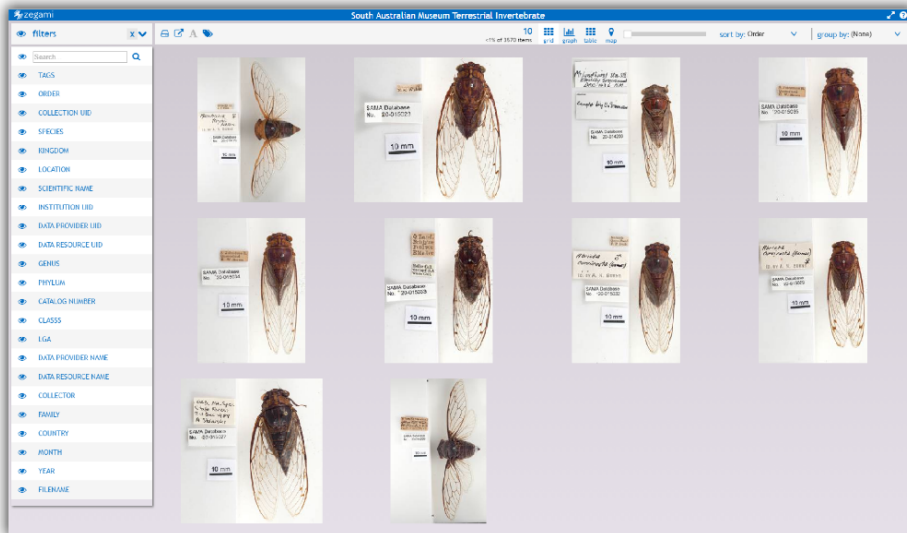
Diagrams – Alternative splice visualisation



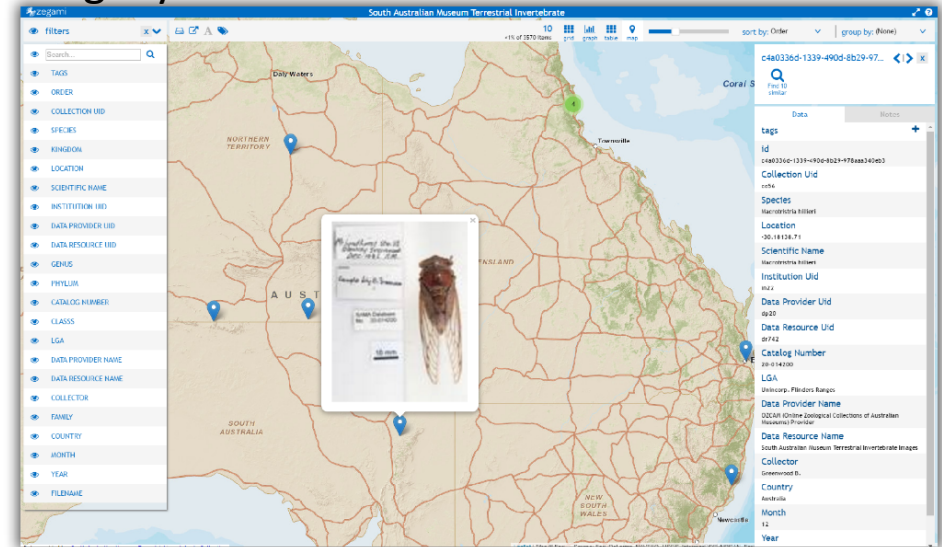
Movies

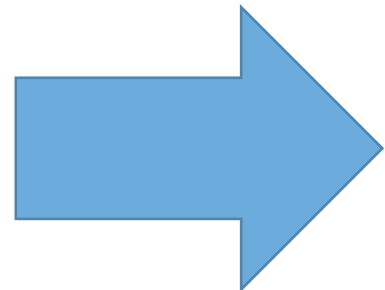
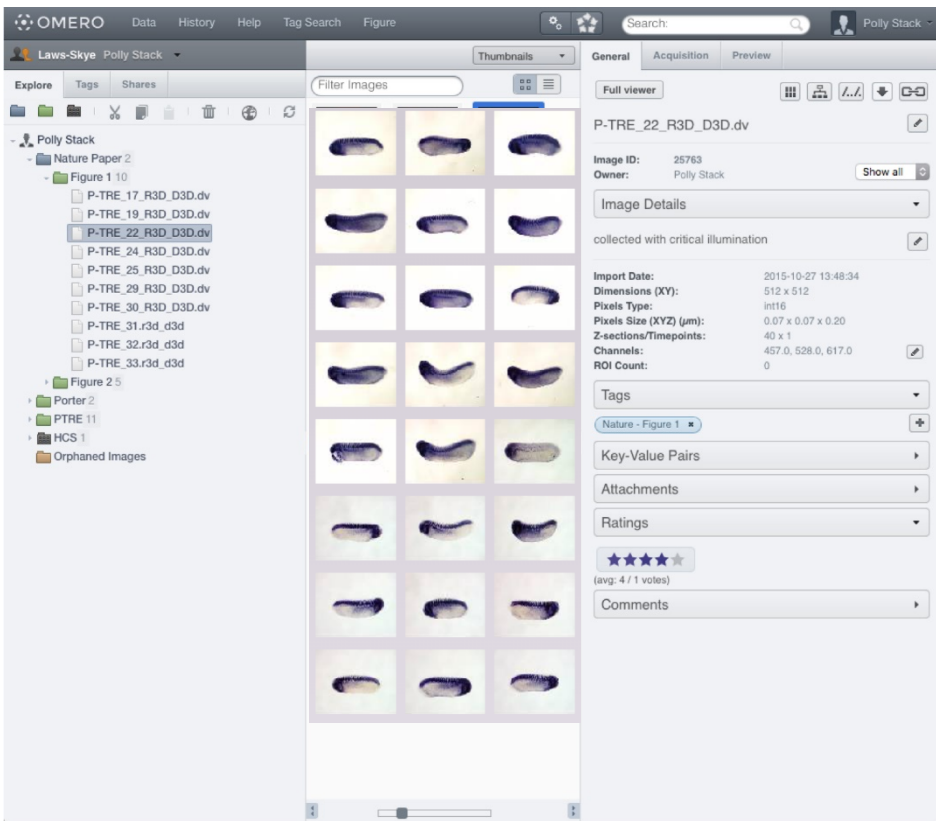


Plugin your own image search algorithms

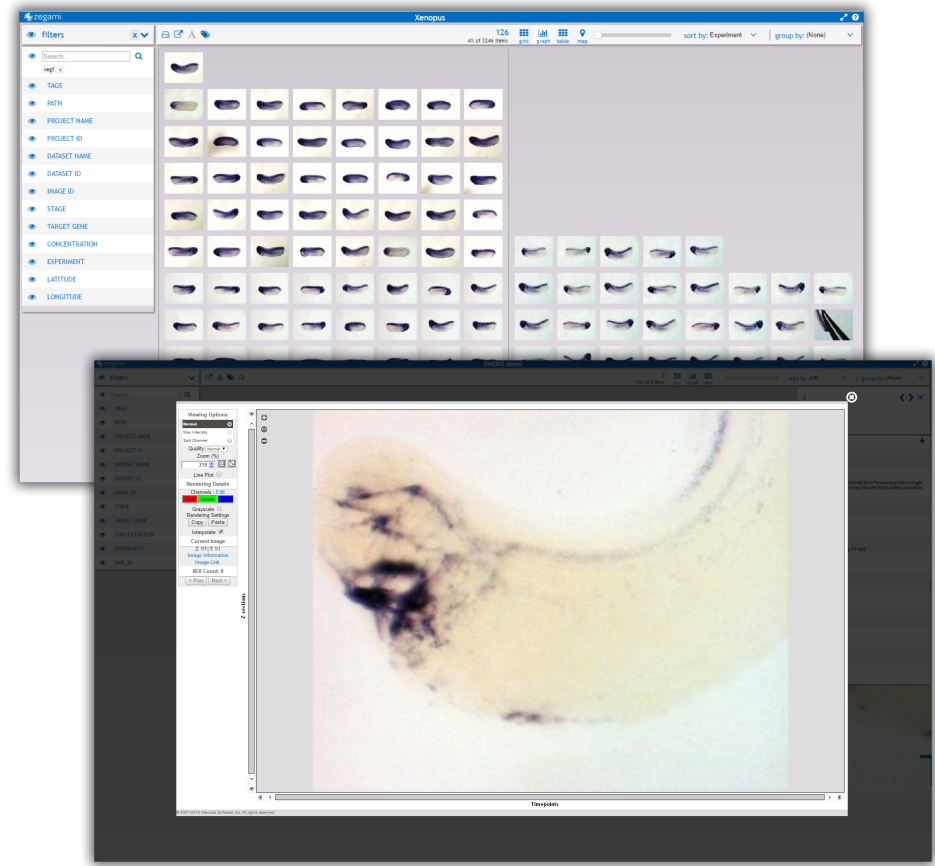


Plugin your own viewers





Zegami
Export





zegami

Come and see a demo!

zegami.com