

Getting Started with CLS OMERO

Introduction

CLS has an OMERO server called Nightshade that allows you to store image data centrally. You can use the OMERO.insight client to upload, view and download data from any computer or laptop on or off-campus.

Your University of Dundee username and password are used to log into the OMERO server, using the URLs given below. Your OMERO account is automatically created the first time you log in and if you change your University of Dundee password, OMERO will automatically reflect this update.

- 1 Download the OMERO.insight client for your operating system from:

<http://downloads.openmicroscopy.org/latest/omero5>



OMERO 5.0.8 Downloads

[Clients](#) | [Plugins](#) | [Additional](#) | [Servers](#) | [Virtual Appliance](#) | [API](#) | [Python](#) | [Java](#) | [Code](#) | [Components](#) | [Previous versions](#)

- Information on this release of OMERO is in the [release announcement](#)
- Full documentation is available as [web documentation](#) or [PDF documentation](#) and there are user guides for the clients on our [Help website](#)
- A standard OMERO user just needs to download the client package with the same major version as their institutional server e.g. 5.0 clients with the 5.0 server
- If you do not have an institutional server, you can apply for an [account on our Demo server](#) or download the [Virtual Appliance](#) to install your own version locally.



OMERO client downloads

Clients	Size	File Name	Checksum
 Windows	78.27 MB	OMERO.clients-5.0.8-ice35-b58.win.zip	96f2c6 (MD5)
 Mac OS X (Java 7+)	229.66 MB	OMERO.clients-5.0.8-ice35-b58.mac_Java7+.zip	06c5f8 (MD5)
 Mac OS X (Java 6)	229.62 MB	OMERO.clients-5.0.8-ice35-b58.mac_Java6.zip	35c5a4 (MD5)
 Linux	76.42 MB	OMERO.clients-5.0.8-ice35-b58.linux.zip	bb021f (MD5)

- Each client package includes [OMERO.insight](#), [OMERO.importer](#) and [OMERO.editor](#) and requires Java 6 or higher.
- Users of Mac OS X should use the clients matching their installed Java version. Users of MacOS X 10.7 and later should install the [latest Java Runtime Environment \(JRE\)](#) and use the Java 7+ downloads. Users of MacOS X 10.6 can only use the Java 6 download.

Note: Mac OS X users should download the clients matching their installed Java version. With MacOS X 10.7 and later, install the latest Java Runtime Environment (JRE) and use the Java 7+ downloads. With MacOS X 10.6 you can only use the Java 6 download.

2 Expand the OMERO.insight client archive.

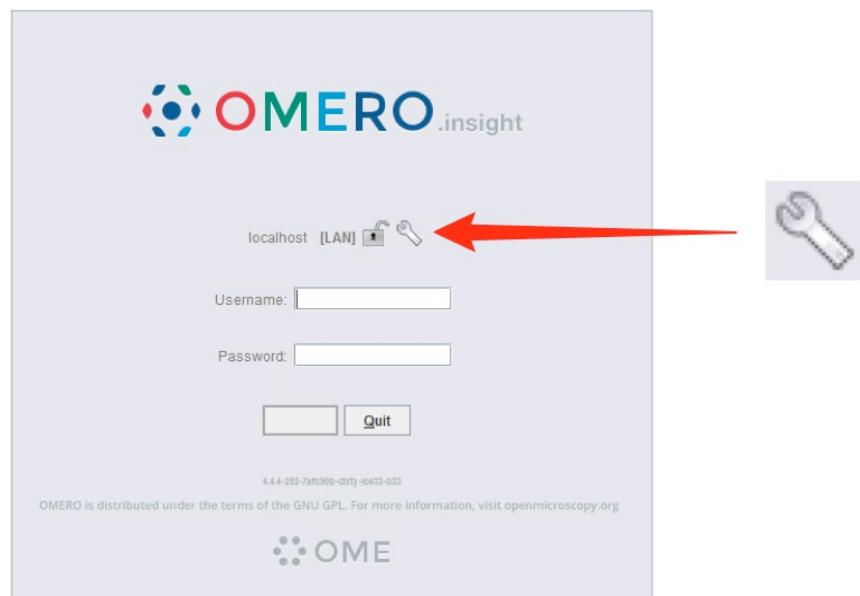


Note: As OMERO.insight is a stand-alone Java application, and does not require installation as such, you do not need administrator privileges to install it.

On Windows, expand the .zip archive and move the OMERO.clients folder to your Documents or home directory, or the Programs folder if you have the permissions.

On a Mac move the OMERO.clients folder to your Applications folder.

3 Open OMERO.insight client. Click on the **Spanner** icon.



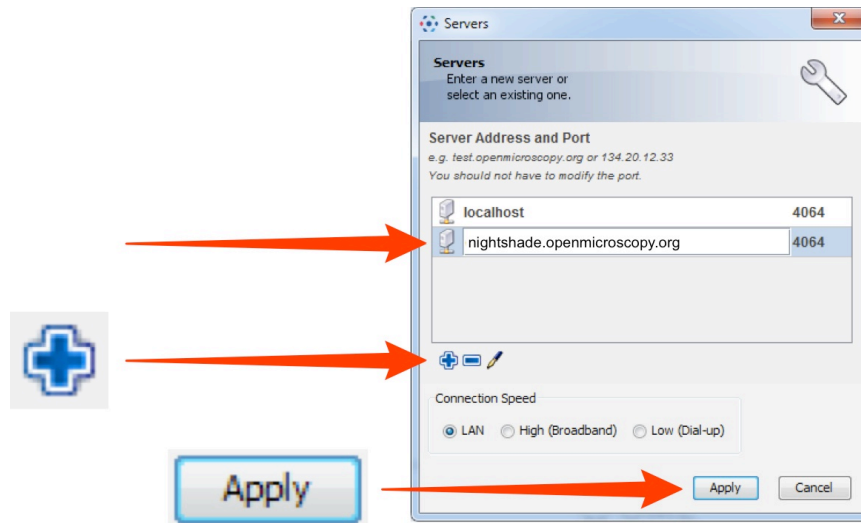
4

In the **Add Server** dialog box, click on the **+** icon.

Enter the server address:

nightshade.openmicroscopy.org

Click on **Apply**.



5

Enter your University of Dundee **Username** and **Password**.

Click on **Login**.



When you log into OMERO for the first time, you will be in a "default" group, which is Private, so only you can see data you place in that group. Being a member of a read-only or read-annotate group in OMERO allows you to share data with other members of the group.

Your lab or PI may have a group you wish to use for collaborating with colleagues. Ask your PI to add you to their group or send an email, giving the names of the groups to which you wish to be added, to the Nightshade Administrator at:

sysadmin@openmicroscopy.org

More details on using groups and sharing data is on the Help page at:

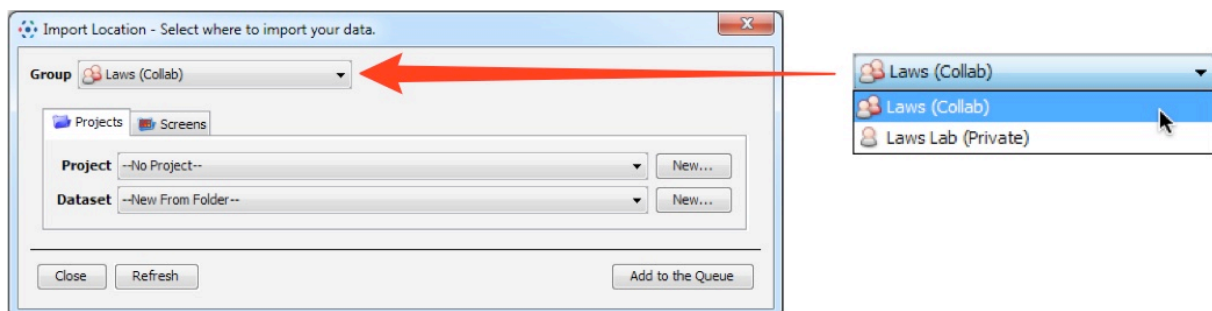
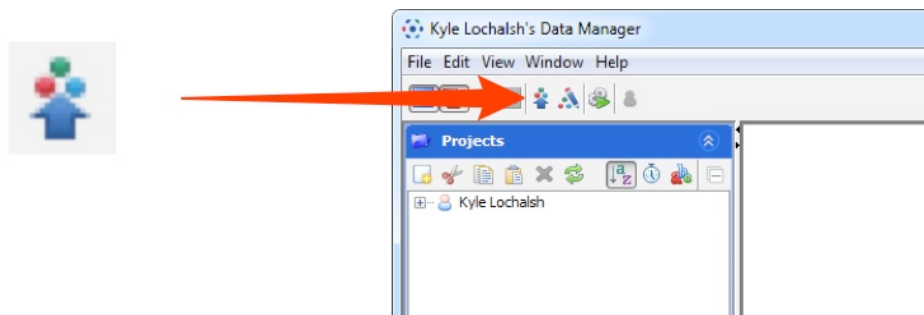
<http://help.openmicroscopy.org/sharing-data.html>

6

Click the **Importer** icon to add image data.

Use the **File Chooser** in the Importer window to select and queue data for import. In the location window, if you belong to more than one group, select the group you wish to import the data into.

Choose existing, or create new Projects, Datasets or Screens to import the data into.



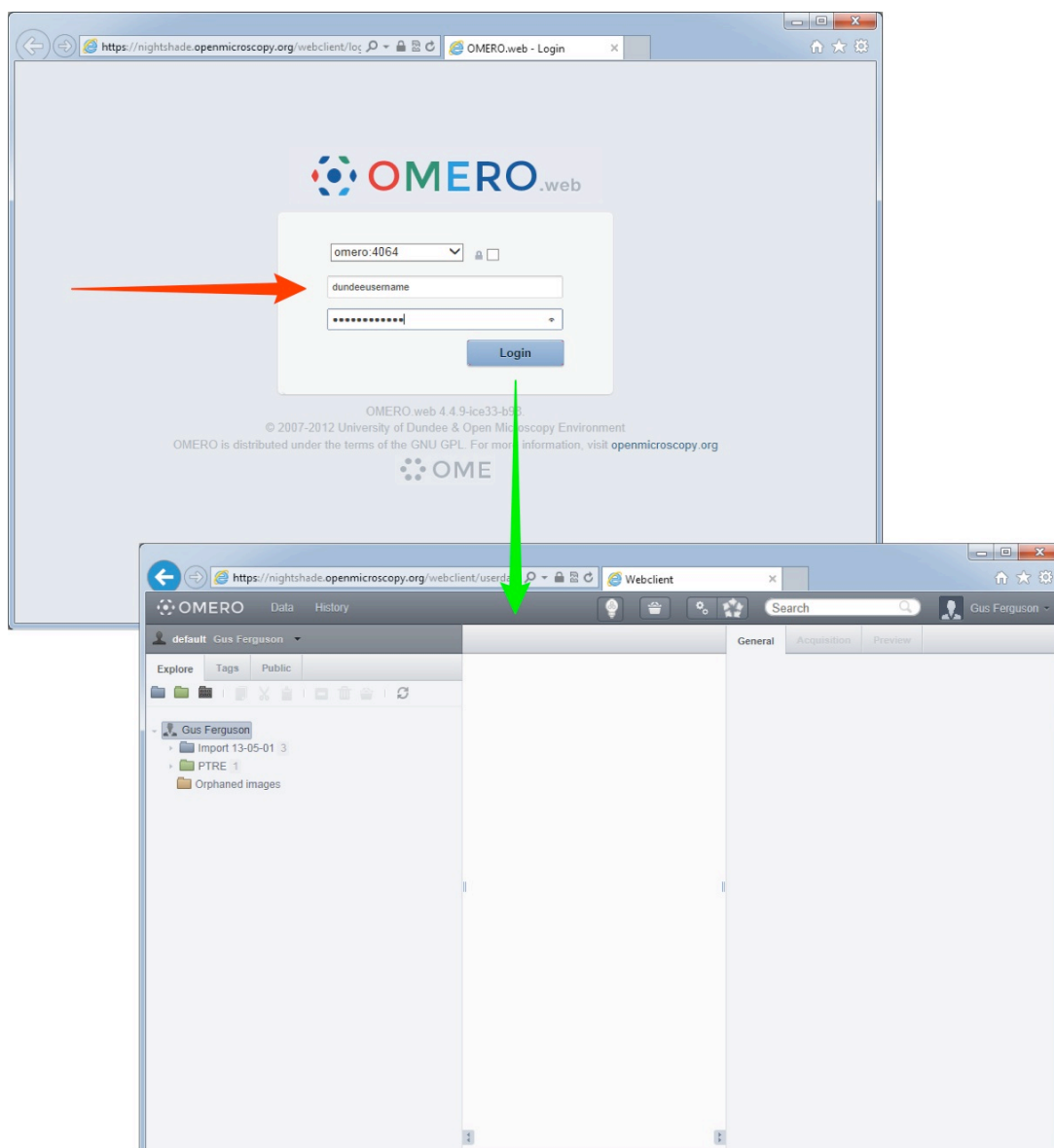
7

OMERO.web allows you to view your data from any web browser with the URL:

nightshade.openmicroscopy.org

You do not have to enter a server name.

OMERO.web uses the same login, and has the same functionality, as OMERO.insight, except OMERO.web cannot import data or create new Regions of Interest (ROIs).



Detailed User Guides for common workflows using OMERO.insight and OMERO.web are available online and for download at:

help.openmicroscopy.org

For help to get started using OMERO or any other questions please email us at:

ux@openmicroscopy.org