

## Publishing Data Using OMERO

The Public feature has been made available on the School of Life Sciences OMERO server, Nightshade.

Selected images can be made accessible to non-OMERO account holders, via a web URL, by placing the images in the PUBLIC group in OMERO.

Instructions on how to make data publicly available are below.

Before you proceed, please note the following points:

- Once your data is placed in the PUBLIC group it is effectively visible to the whole world without any log-in required to view it.
- As currently configured, only ROIs associated with data in the PUBLIC group will be visible to the Public User, tags, attachments, comments or ratings will not be visible.
- Public Users will be able to download a JPEG version of your images via their web browser but will not have access to the data in the original format.
- Public Users will be able to alter the rendering settings while viewing, but any changes will not be saved.
- PUBLIC group is Read-Only, so other OMERO users who are also members of the PUBLIC group will be able to access your data and annotations in the PUBLIC group on a Read-Only basis.
- Data moved from other groups into the PUBLIC group will no longer be visible in the original group. You will be able to move it back at any stage, but you should consider importing a new copy of the data into the PUBLIC group if you wish to retain the original copy in its original group.

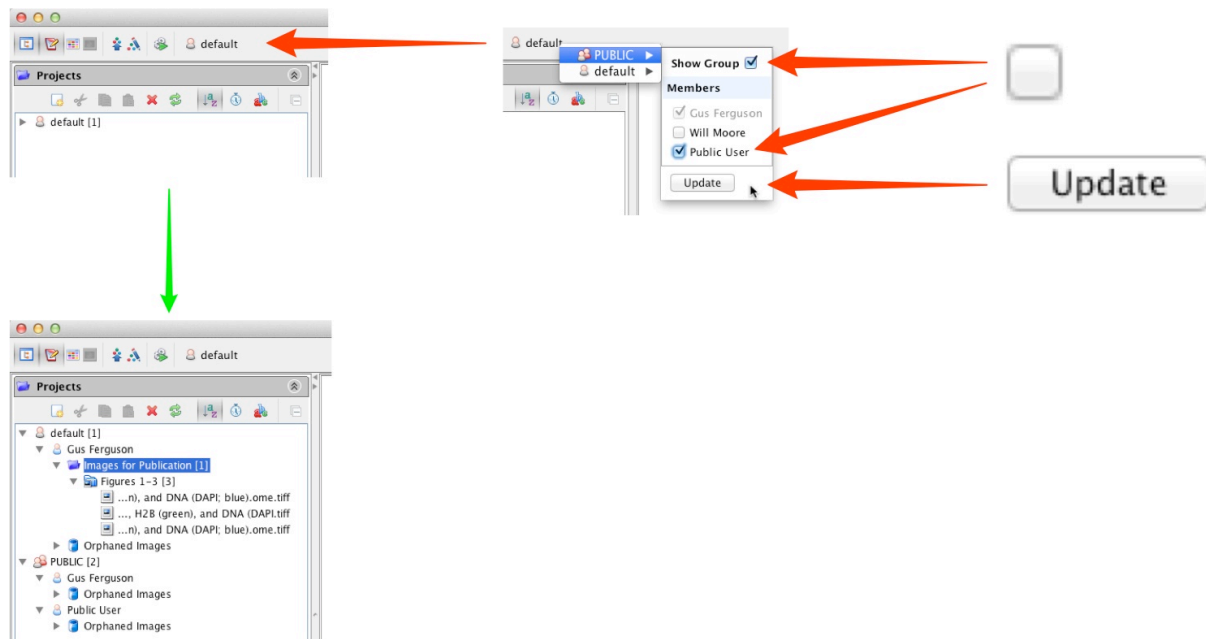
- 1 You need to be made a member of the **PUBLIC** group on Nightshade, the SLS OMERO server before you can share data.  
To do this please email your SLS-Dundee University LDAP username to the OMERO administrator at:

[nightshade-support@lists.openmicroscopy.org.uk](mailto:nightshade-support@lists.openmicroscopy.org.uk)

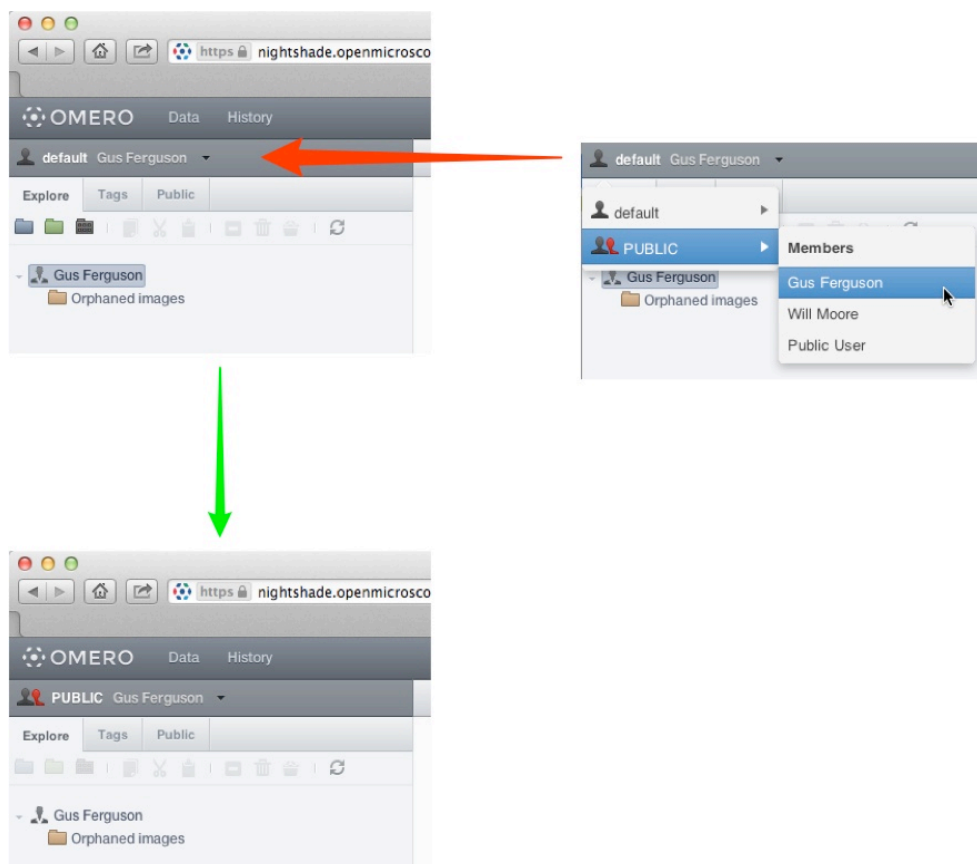
or speak to anyone in the OME team.

- 2 Once you are a PUBLIC group member, log into your OMERO account as usual via OMERO.insight or OMERO.web  
If you were formerly a member of just one group on OMERO you will not have seen the **Group > User** selection menu.  
As a member of the PUBLIC group this will now be visible as shown.  
Select yourself to show your data in the PUBLIC group.

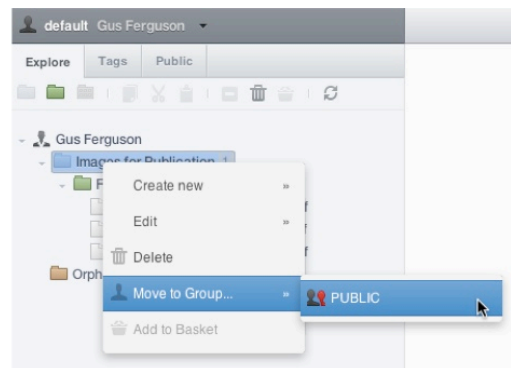
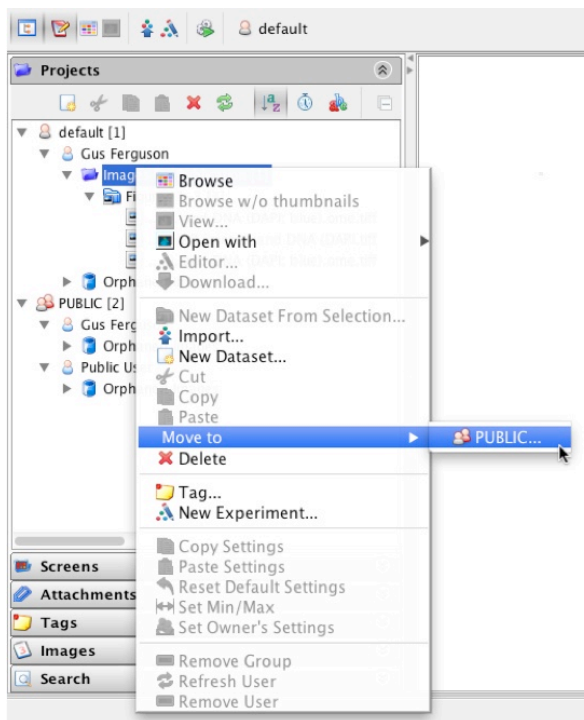
### In OMERO.insight:



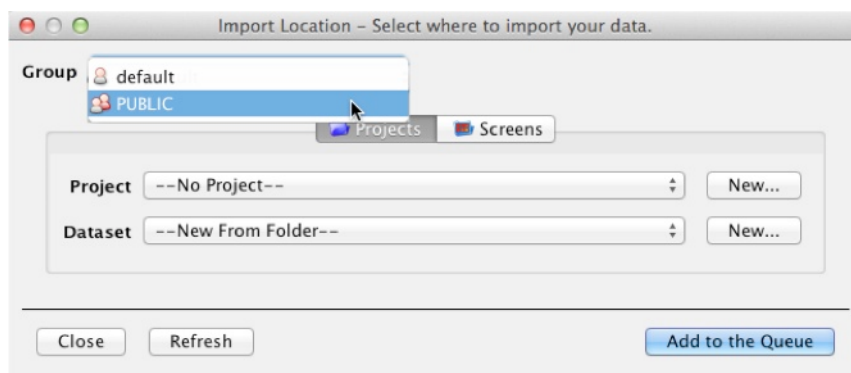
### In OMERO.web:



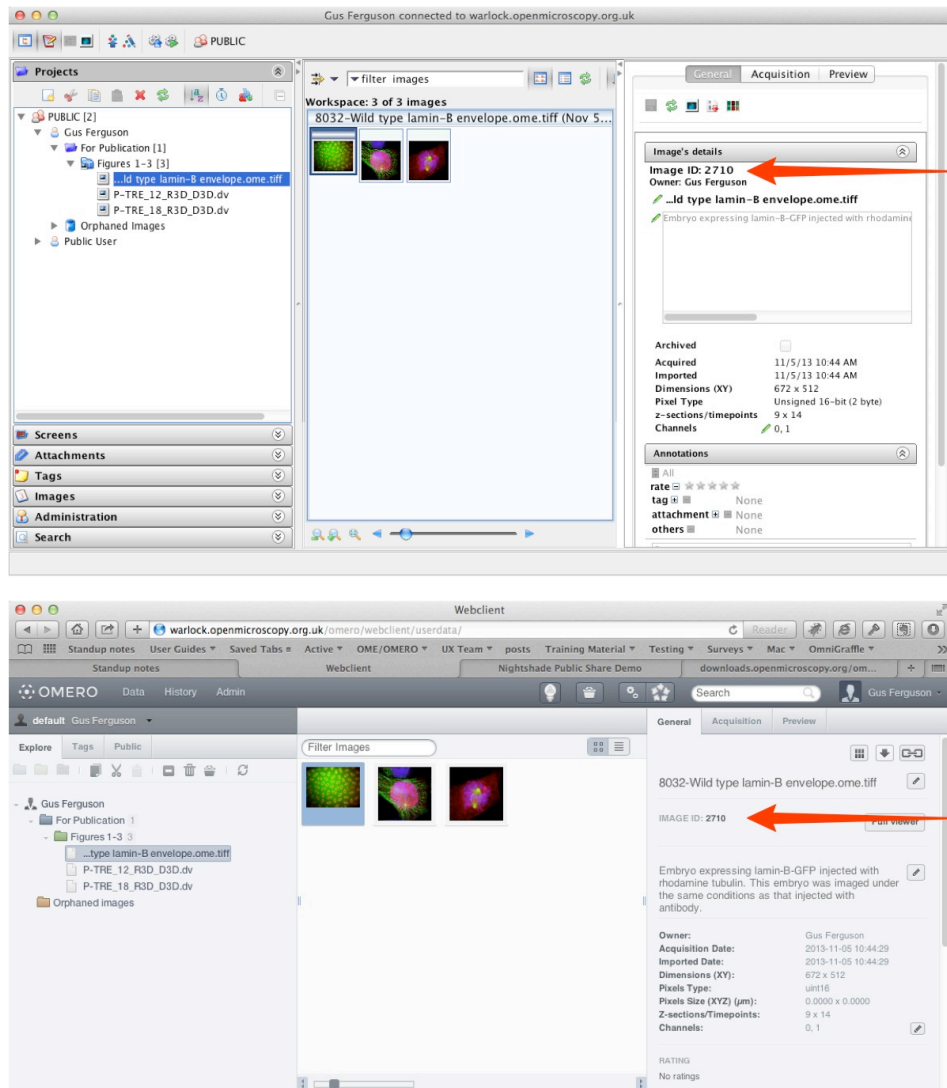
- 3 For images to be visible to the public, the data must be in the PUBLIC group. You remain the owner of any of your images in the PUBLIC group, and can still change rendering settings, add ROIs or annotate them. You can either move data from an existing group into the PUBLIC group, or you can import data directly into the PUBLIC group.
- 4 To move data into the PUBLIC group, select the project, dataset or images in the left hand pane. Right-click and select **PUBLIC** from **Move to ...** or **Move to Group ...** in the menu. After a confirmatory dialogue, the progress of the move will show in the **Activities** window.



- 5 To import data directly into the PUBLIC group, in the Import Location window choose **PUBLIC** from the **Group** drop-down menu.



## 6 Images IDs, shown in the right pane, are used to link to images in the PUBLIC group.



## 7 To create an HTML link to the thumbnail or the full viewer display of the image, use the following syntax where 1234 represents the image ID:

HTML to embed the thumbnail:

```
src="https://nightshade.openmicroscopy.org/webgateway/render_thumbnail/1234/"
```

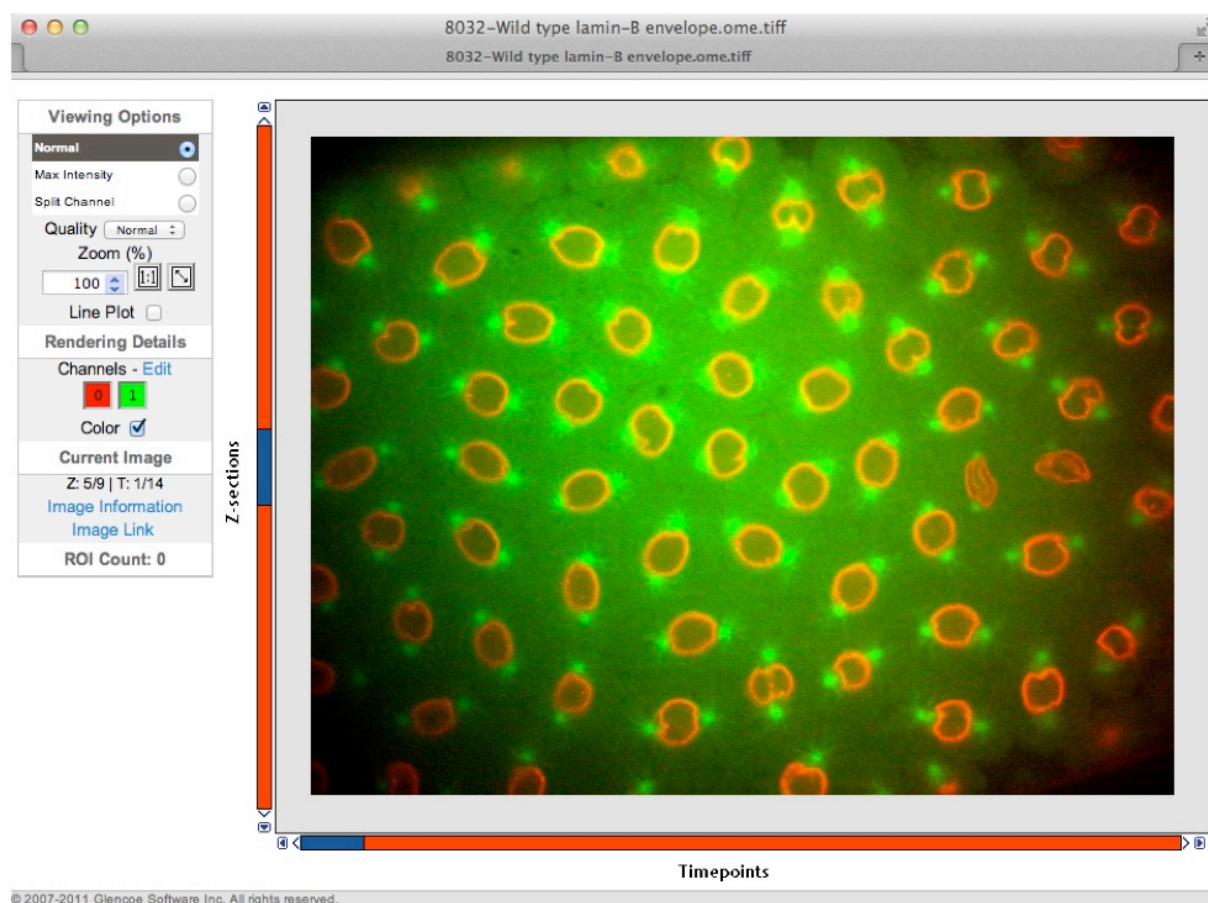
Thumbnails have a default width of 64 px but can be displayed at any width by customising the thumbnail URL with the required size in pixels at the end of the URL:

```
src="https://nightshade.openmicroscopy.org/webgateway/render_thumbnail/1234/200/"
```

HTML for the link to the full image in the image viewer:

```
src="https://nightshade.openmicroscopy.org/webgateway/img_detail/1234/"
```

- 8 Viewing an image in the full viewer, the public user can zoom, scroll, step through Z or T sections, adjust rendering settings and view ROIs and basic image details. Any changes made will not be saved.



Data from JCB: Civelekoglu-Scholey et al., JCB, doi: 10.1083/jcb.200908150

- 9 Nightshade also allows file attachments on images to be downloaded using a URL. Attach the file to the image in PUBLIC group. Expand the **Attachments** tab in the right-hand pane, hover the cursor over the attachment and make a note of the Annotation ID shown. To create an HTML link to download the file, use the following syntax, where 5678 represents the Annotation ID of the attachment:

href="https://nightshade.openmicroscopy.org/webclient/annotation/5678/"



## Demonstration

The following example HTML code gives the page shown below.

```
<body>
<h2>Thumbnail Gallery</h2>
<p>Click on a thumbnail to see the image in the full OMEMO.web viewer (opens in a new tab).</p>

<div class="gallery">
<div class="gallery-image">
<a href="https://nightshade.openmicroscopy.org/webgateway/img_detail/3925540" target="_blank"
></a>
<div class="desc">Wild type lamin-B envelope</div>
<div class="attribute">Data from JCB: Civelekoglu-Scholey et al.,<br/>JCB, doi: <a
href="http://jcb.rupress.org/content/188/1/49">10.1083/jcb.200908150</a></div>
</div>
</div>

<div class="gallery">
<div class="gallery-image">
<a href="https://nightshade.openmicroscopy.org/webgateway/img_detail/3925541"
target="_blank"></a>
<div class="desc">P-TRE_12_R3D_D3D</div>
</div>

<div class="gallery-image">
<a href="https://nightshade.openmicroscopy.org/webgateway/img_detail/3925542"
target="_blank"></a>
<div class="desc">P-TRE_15_R3D_D3D</div>
</div>

<div class="gallery-image">
<a href="https://nightshade.openmicroscopy.org/webgateway/img_detail/3925543"
target="_blank"></a>
<div class="desc">P-TRE_19_R3D_D3D</div>
</div>

<p>Download the <a
href="https://nightshade.openmicroscopy.org/webclient/annotation/358508/">intensity results</a>
for P-TRE_19_R3D_D3D as a spreadsheet.</p>
</div>

<div class="gallery">
<div class="gallery-image">
<a href="https://nightshade.openmicroscopy.org/webgateway/img_detail/3925545"
target="_blank"></a>
<div class="desc">P-TRE_23_R3D_D3D</div>
</div>

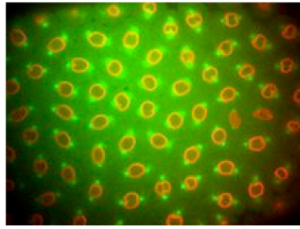
<div class="gallery-image">
<a href="https://nightshade.openmicroscopy.org/webgateway/img_detail/3925546" target="_blank"></a>
<div class="desc">P-TRE_22_R3D_D3D</div>
</div>
</div>
</body>
```

The CSS is at: <http://help.openmicroscopy.org/css/display.css>



### Thumbnail Gallery

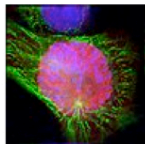
Click on a thumbnail to see the image in the full OMERO.web viewer (opens in a new tab).



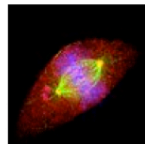
Wild type lamin-B envelope

Data from JCB: Civelekoglu-Scholey et al.,

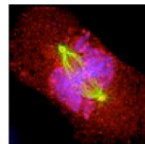
JCB, doi: [10.1083/jcb.200908150](https://doi.org/10.1083/jcb.200908150)



P-TRE\_12\_R3D\_D3D

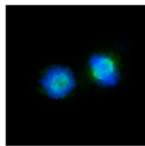


P-TRE\_15\_R3D\_D3D

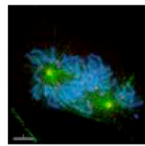


P-TRE\_19\_R3D\_D3D

Download the [intensity results](#) for P-TRE\_19\_R3D\_D3D as a spreadsheet.



P-TRE\_23\_R3D\_D3D



P-TRE\_22\_R3D\_D3D

Data from JCB: Civelekoglu-Scholey et al., JCB, doi: [10.1083/jcb.200908150](https://doi.org/10.1083/jcb.200908150)

- 10** The OMERO WebGateway is a Django app that enables images in the PUBLIC group to be viewed in a number of other ways.

Details can be found at:

<https://www.openmicroscopy.org/site/support/omero/developers/Web/WebGateway.html>