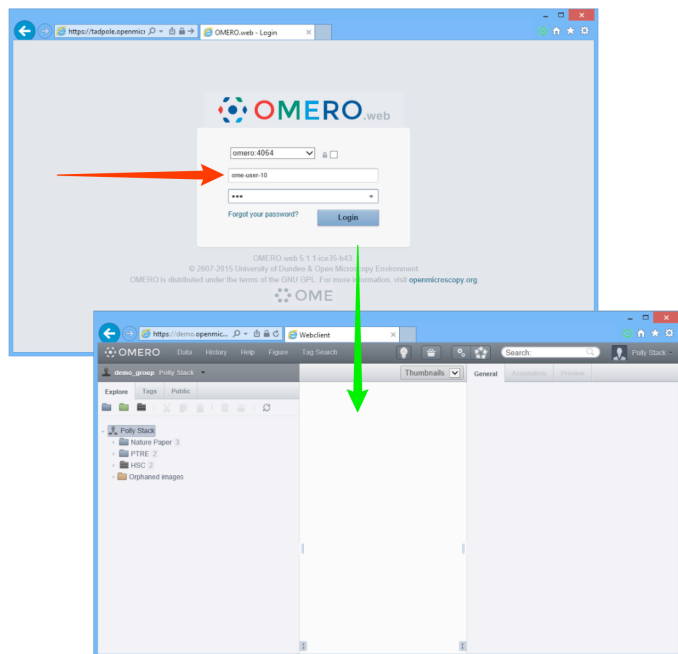


- 8 Use OMERO.web to view your data from any web browser with the URL:

nightshade.openmicroscopy.org

You do not have to enter a server name.

OMERO.web uses the same login, and has the same functionality, as OMERO.insight, except OMERO.web cannot import data or create new ROIs.



- 9 Many SLS labs use OMERO groups to allow members to see and work together on data. Ask your Supervisor to add you to your lab group, or contact the OME Team.

Detailed User Guides for common workflows using OMERO.insight and OMERO.web, including the Help guide for OMERO.figure, are available online and for download at:

help.openmicroscopy.org

The OMERO.figure web site, which includes videos illustrating key features, is at:

http://will-moore.github.io/figure/

For help to get started using OMERO or any other questions please email us at:

nightshade-support@lists.openmicroscopy.org.uk

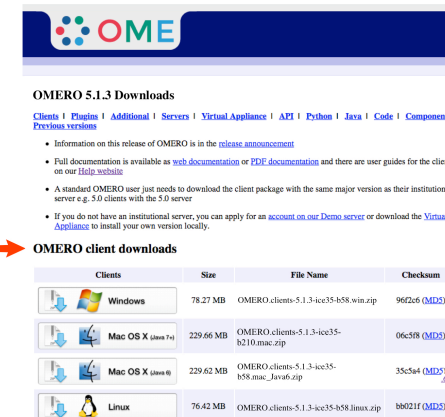
Getting Started with OMERO.insight and Nightshade

SLS has an OMERO server called Nightshade that allows you to store image data centrally. You can use the OMERO.insight client to upload, view and download data from any computer or laptop on or off-campus.

Your University of Dundee username and password are used to log into the OMERO server, using the URLs given below. Your OMERO account is automatically created the first time you log in and if you change your School of Life Sciences password, OMERO will automatically reflect this update.

- 1 For Windows or Linux, download the OMERO.insight client for your platform from:

http://downloads.openmicroscopy.org/latest/omero5



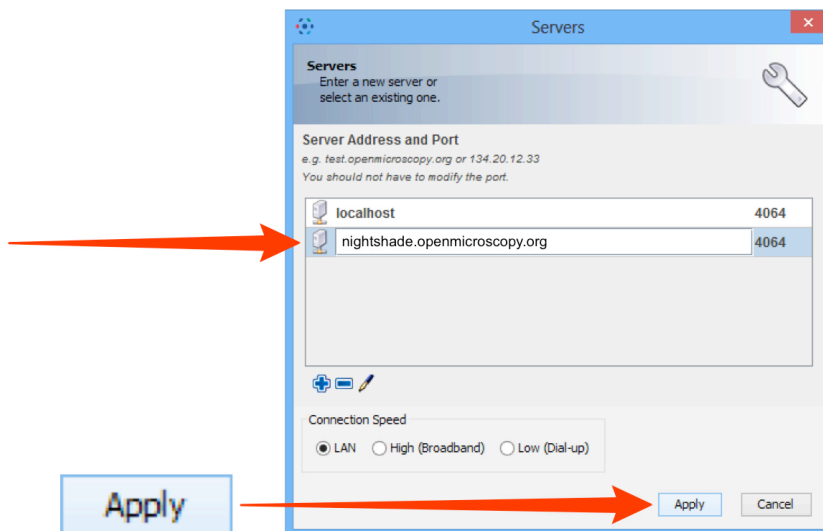
- 2 Expand the OMERO.insight client archive.
On Windows move the OMERO folder to your home directory, **not** Programs.
- 3 On a Mac, use the SLS Self Service app to download and install OMERO.insight.



- 4 Open the OMERO.insight client.
Click the **Spanner** icon.



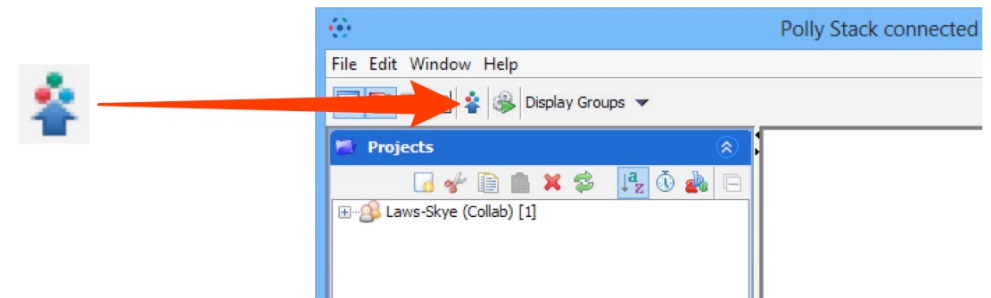
- 5 In the **Add Server** dialogue box, click the **+** icon.
Enter the server address:
nightshade.openmicroscopy.org.uk
Click **Apply**.



- 6 Enter your School of Life Sciences **Username** and **Password**.
Click **Login**.



- 7 Click the **Importer** icon to add image data.
Using the file chooser in the Importer window select and queue data for import.
Use the location window to choose existing or create new Projects, Datasets or Screens into which to import the data.



Note: To import data from a networked drive on Macs, the drive must be mounted in the Finder first.