

# Web-based display of 3D data with the Interactive Embryo Viewer (IEV)

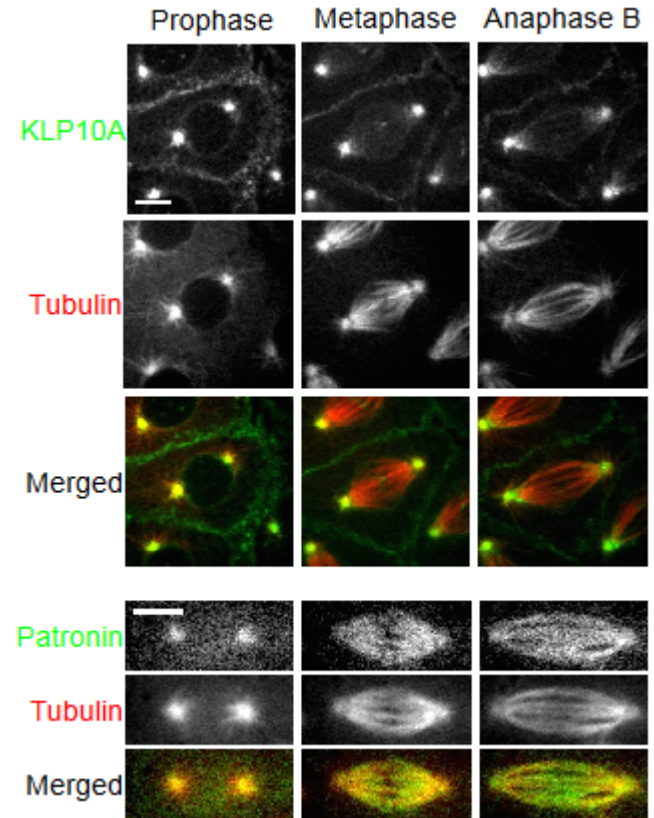
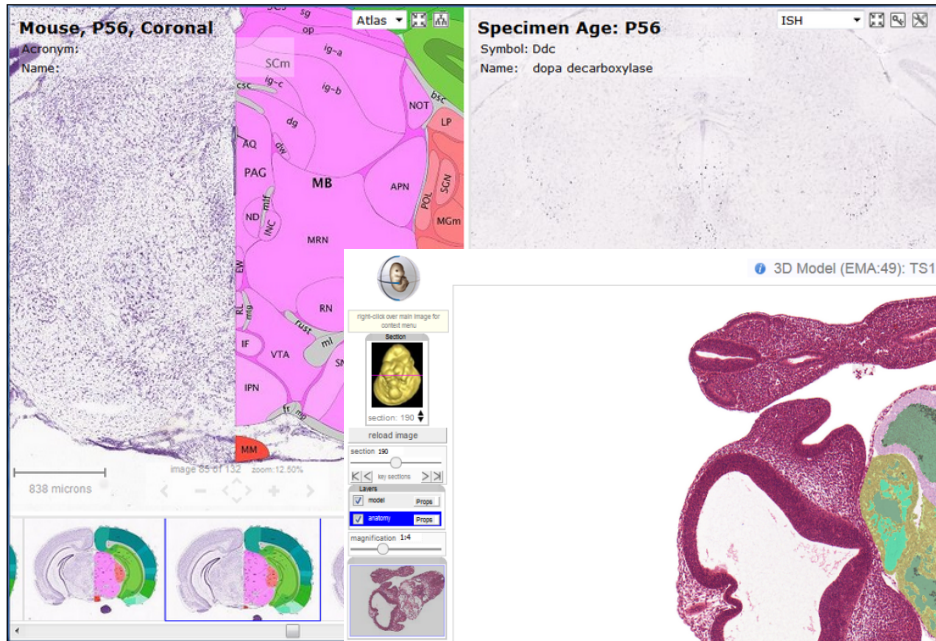
OMERO User Meeting, Dundee, Scotland

May 31<sup>st</sup> 2016

Henrik Westerberg, Team Leader, Systems Imaging Group  
James Brown  
Neil Horner  
Jennifer Vibert

Ann-Marie Mallon, BioComputing, MRC Harwell

# Dissemination of 3D image data on the web



OMERO.figure

# International Mouse Phenotyping Consortium (IMPC)

www.mousephenotype.org

We are building the first truly comprehensive, functional catalogue of a mammalian genome.



Genes

Find genes

3154 Genes analysed

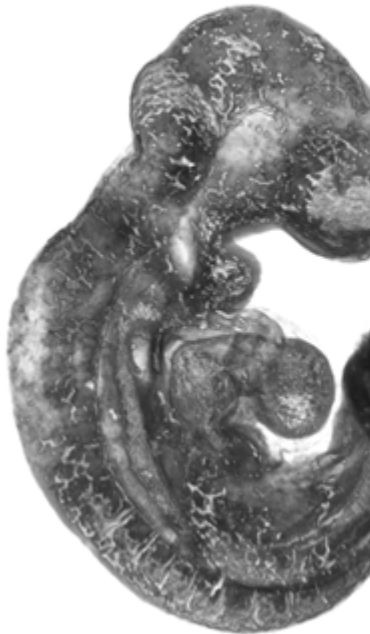
Stay Connected

News and Events

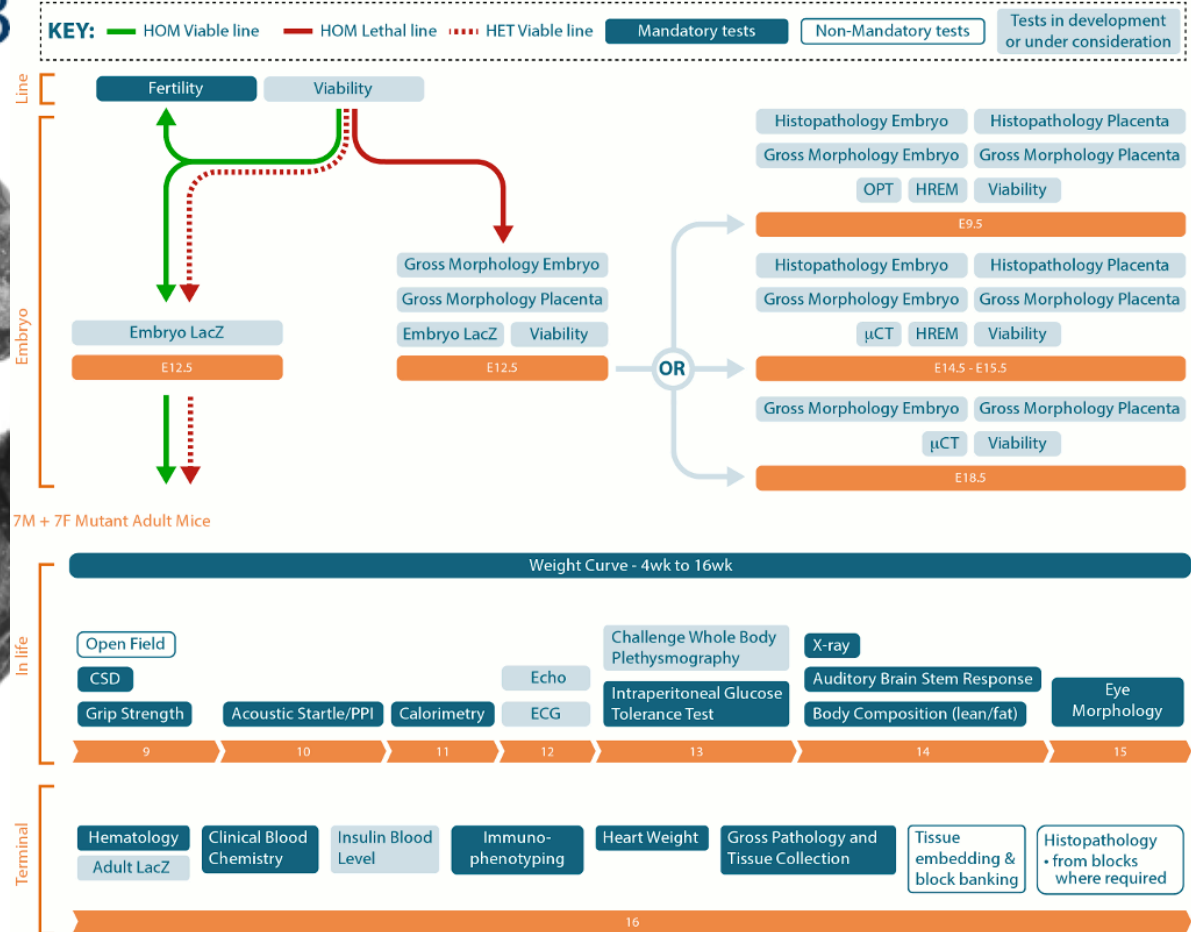
October 29, 2015  
[IMPC in G7 report](#)

October 28, 2015  
[Training Course: Pr](#)

August 14, 2015  
[Phenoview: a new f](#)



3



Internatic

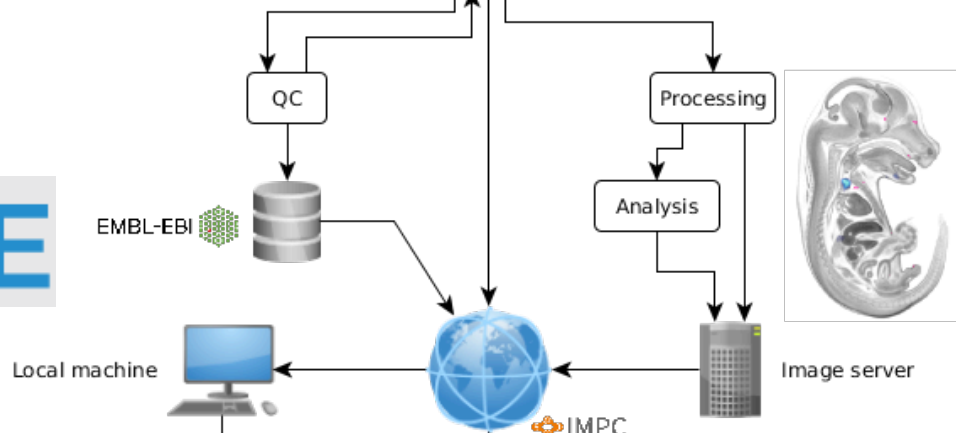
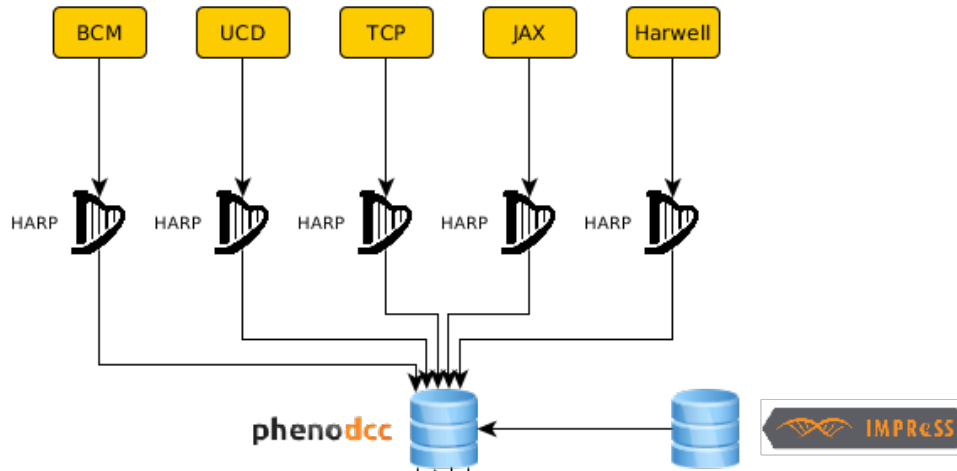
The goal of the discover functi phenotyping 2

E9.5 OPT



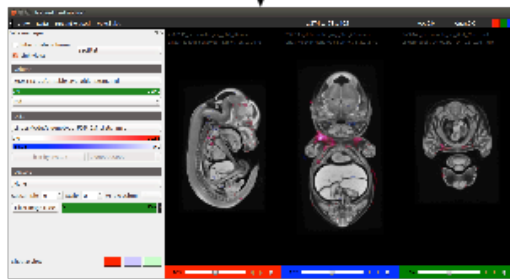
## Bio-formats

2D

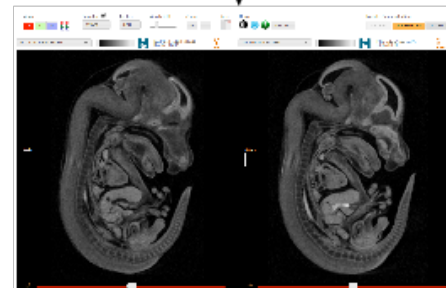


3D

MRC Harwell  
Mysql database  
defined directory  
structure



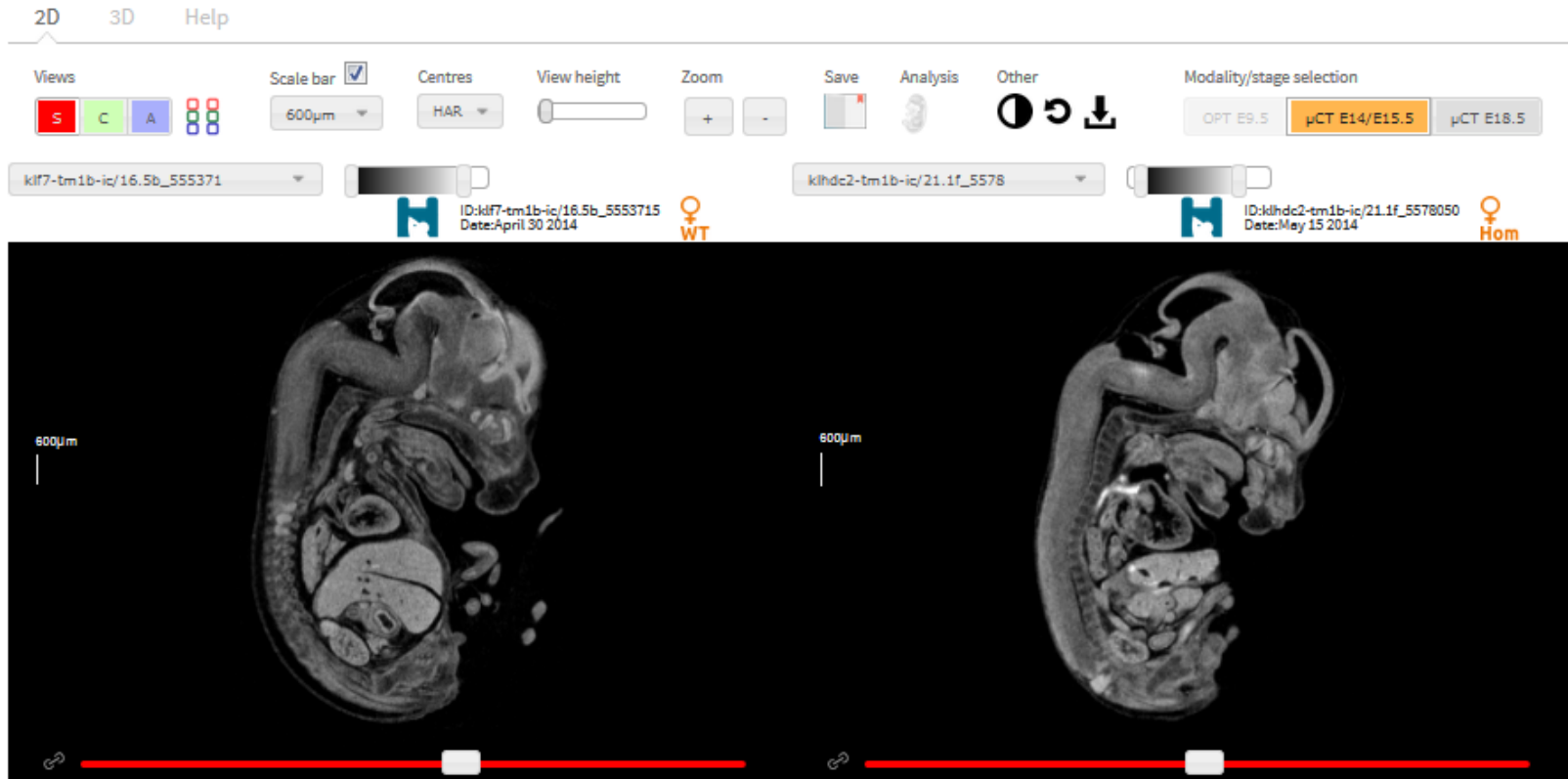
Volumetric Phenotype Viewer



Interactive Embryo Viewer



# Interactive Embryo Viewer (IEV)

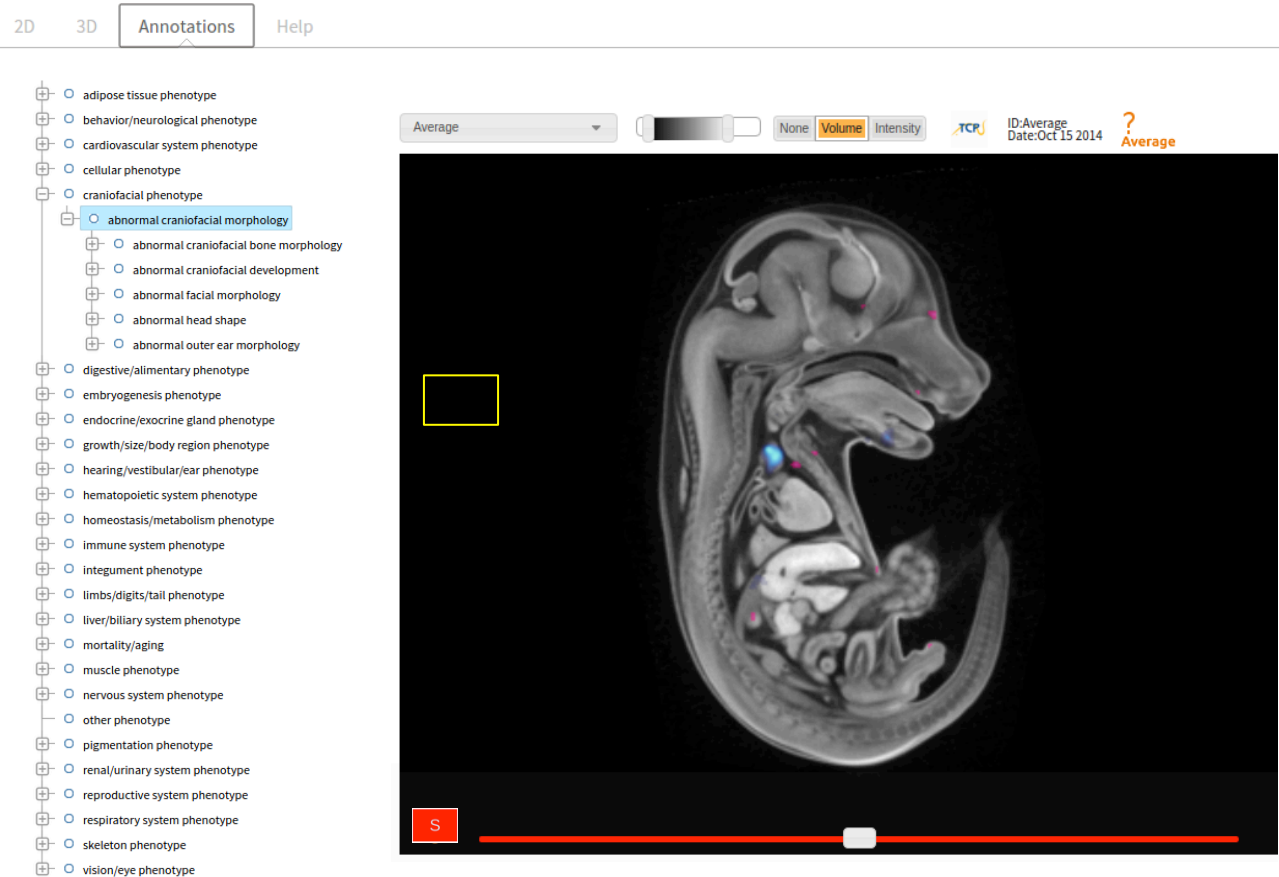


- Rapid and intuitive access into the data
- Developed in Javascript, 2D/3D support provided by XTK
- Integrate the display into OMERO



# Annotations Mockup within IEV

- Links regions of interest to ontologies (EMAP-PATO)
- Found through a high throughput image analysis pipeline



# New: 3D mode released to live

Home » Search » » IEV

Batch search

Search

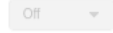


2D 3D Help

Views



Scale bar



Centres



View height



Zoom



Save



Analysis



Other



Modality/stage selection



kif7-tm1b-ic/16.5b\_555371



ID:kif7-tm1b-ic/16.5b\_5553715  
Date:April 30 2014



kif7-tm1b-ic/16.5a\_555371



ID:kif7-tm1b-ic/16.5a\_5553714  
Date:April 30 2014



[http://www.mousephenotype.org/embryoviewer/?gene\\_symbol=Klf7&v=3d](http://www.mousephenotype.org/embryoviewer/?gene_symbol=Klf7&v=3d)