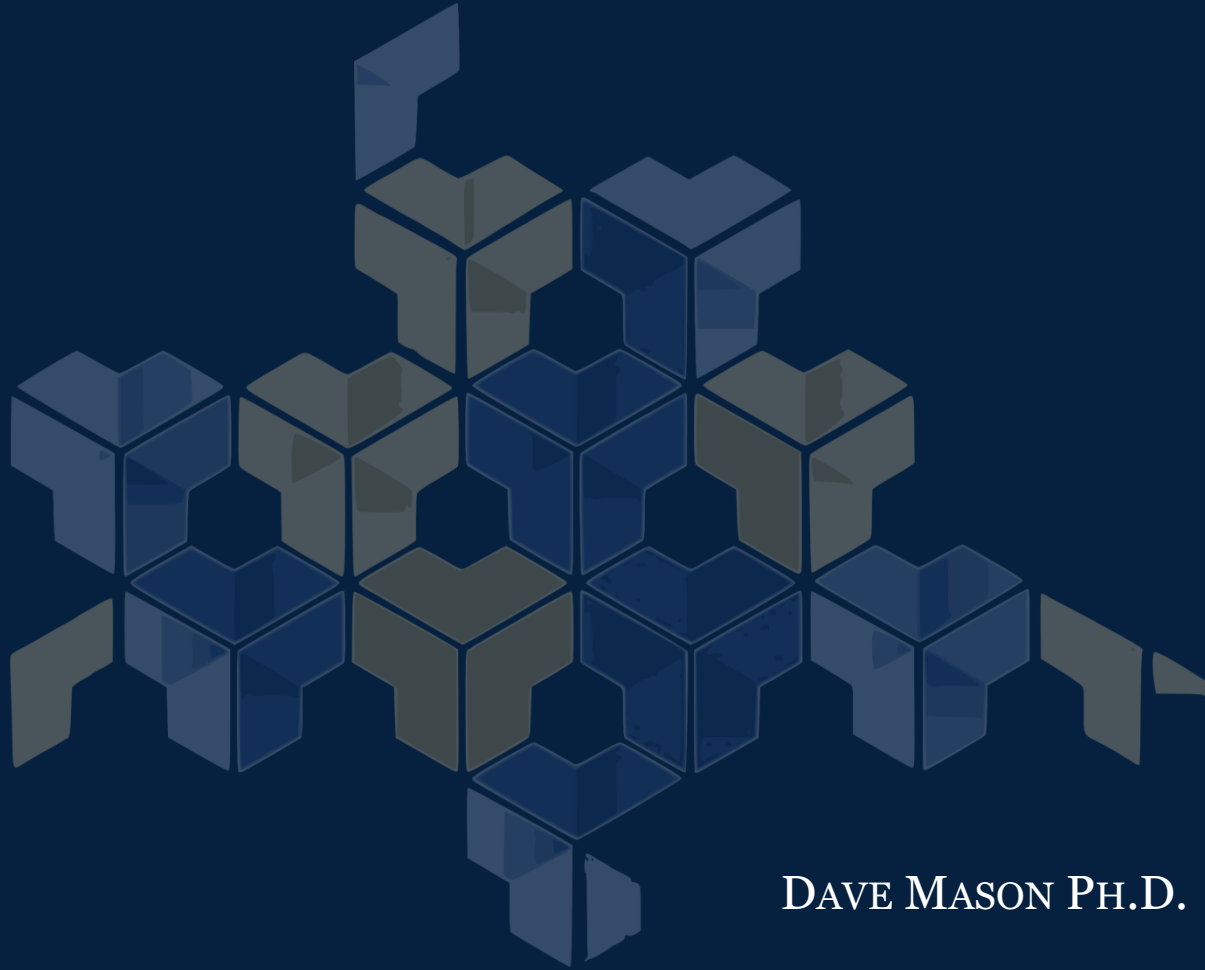
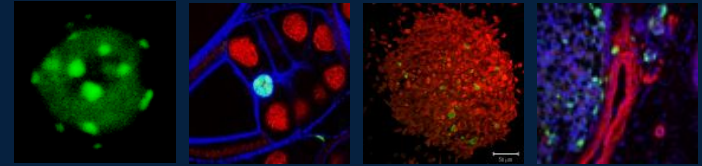


CENTRE FOR CELL IMAGING

A world-class resource for imaging at the University of Liverpool



DAVE MASON PH.D.

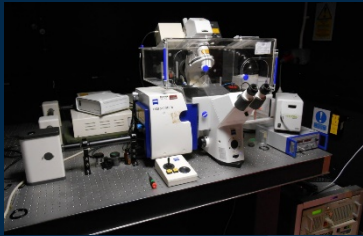
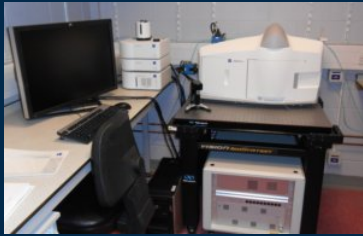
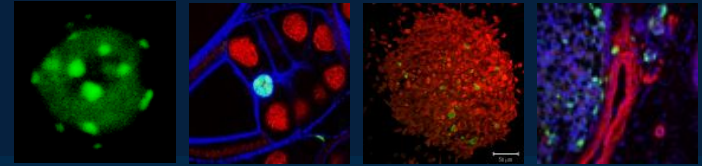
A TECHNOLOGY DIRECTORATE
SHARED RESEARCH FACILITY



UNIVERSITY OF
LIVERPOOL

CENTRE FOR CELL IMAGING

A world-class resource for imaging at the University of Liverpool



EQUIPMENT:

5X CONFOCAL LSMs: - 2x MULTIPHOTON
- BIOAFM / TIR-FM
- FLIM / FRET
- HYPER SPECTRAL

2X WIDEFIELD - FAST & HIGH SENSITIVITY (SPT, SOFI, &c)

1X LIGHTSHEET Z1 - WHOLE ORGANISM

PHOTOTHERMAL - MULTIMODE FLUORESCENCE / GNP

STAFF:

2 ACADEMIC LEADS / DIRECTORS

FACILITY MANAGER

TECHNICAL SPECIALIST / IMAGE ANALYST / IT & DATA MANAGEMENT

TECHNICIAN

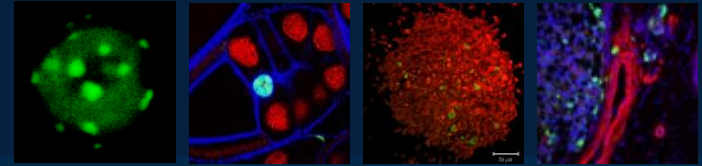
A TECHNOLOGY DIRECTORATE
SHARED RESEARCH FACILITY



UNIVERSITY OF
LIVERPOOL

CENTRE FOR CELL IMAGING

A world-class resource for imaging at the University of Liverpool



GENERAL USERS / LAB GROUPS

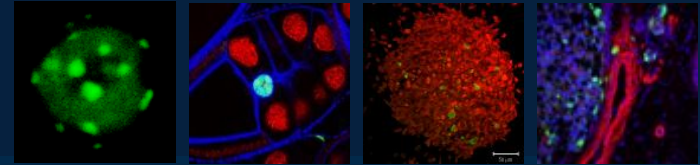
EXTERNAL COLLABORATIONS / PRIVATE DATA SHARING

TRANSIENT USERS (HONS STUDENTS, VISITING FELLOWS)

OPEN DATA PROJECTS

CENTRE FOR CELL IMAGING

A world-class resource for imaging at the University of Liverpool



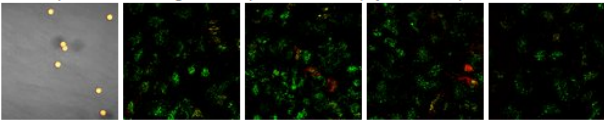


SmartFlares

OMERO.gallery Logged in as: Public User Logout

Home Logged in as: Public User

SmartFlares

Project to investigate the mechanism of action of SmartFlare RNA detection probes. Data linked to the notebook at: [https://raphazlabcommons.wordpress.com] and licensed under the Creative Commons Attribution International License [http://creativecommons.org/licenses/by/4.0/].

- [2015-02-26-NanoFlareLoadingCtrl Load All Images](#)
First experiment looking at the Uptake Control (Cy5 labelled) in HeLa cells at the 18h timepoint.

- [2015-03-03-TEM-UptakeControl Load All Images](#)
Transmission Electron Micrographs of the Uptake Control SmartFlares, acquired by Joan Comeng

- [2015-03-10-NanoFlareLive Load All Images](#)


2015-02-26-NanoFlareLoad... x

cc02.liv.ac.uk/webgateway/img_detail/12621/

Viewing Options

Normal

Max Intensity

Split Channel

Quality Normal

Zoom (%) 32

Line Plot

Rendering Details

Channels - Edit

Dextran

Transmitted

SmartFlares

Grayscale

Rendering Settings

Copy Paste

Interpolate

Z-sections

Timepoints

© 2007-2016 Glencore Software Inc. All rights reserved.

SPECIAL THANKS TO WILL MOORE!

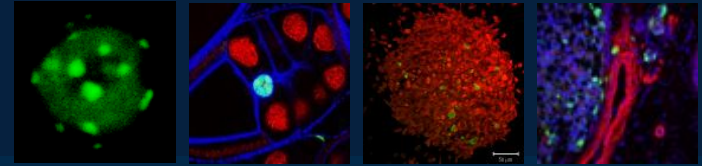
A TECHNOLOGY DIRECTORATE
SHARED RESEARCH FACILITY



UNIVERSITY OF
LIVERPOOL

CENTRE FOR CELL IMAGING

A world-class resource for imaging at the University of Liverpool



2016 Open Biology: Sun et al

Data supporting the 2016 paper "Selectivity in glycosaminoglycan-binding dictates the distribution and diffusion of fibroblast growth factors in the pericellular matrix", submitted to Open Biology.

- [Binding and control for FGF1](#) [Load All Images](#)
- [Binding and control for FGF10](#) [Load All Images](#)
- [Binding and control for FGF2](#) [Load All Images](#)

OPEN BIOLOGY

Home Content Information for About us Sign up Submit

Selectivity in glycosaminoglycan binding dictates the distribution and diffusion of fibroblast growth factors in the pericellular matrix

Changeye Sun, Marco Marcello, Yong Li, David Mason, Raphaël Lévy, David G. Fernig
DOI: 10.1098/rsob.150277 Published 1 March 2016

May 2016

Table of Contents
About the Cover
Index by author

Search this issue

Share Citation tools



SPECIAL THANKS TO WILL MOORE!

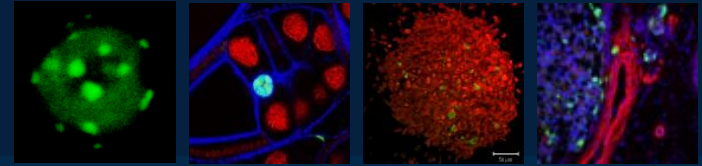
A TECHNOLOGY DIRECTORATE
SHARED RESEARCH FACILITY



UNIVERSITY OF
LIVERPOOL

CENTRE FOR CELL IMAGING

A world-class resource for imaging at the University of Liverpool



PRIORITIES FROM A FACILITY PERSPECTIVE:

UPLOAD IN OMERO.WEB (EVEN AT THE COST OF PATHS)

BETTER USER ACCESS TO ORIGINAL DATA (DOWNLOAD DATASETS &C)

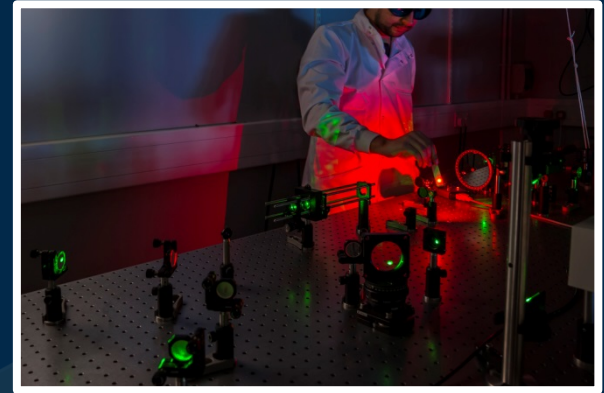
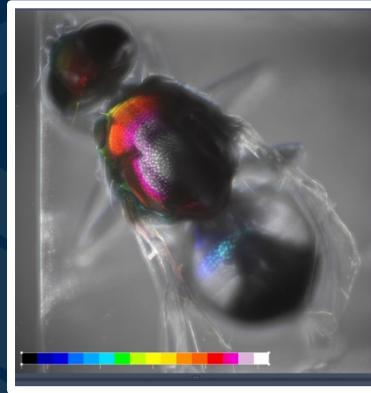
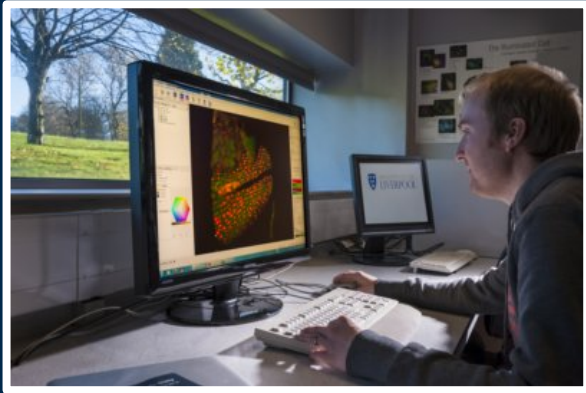
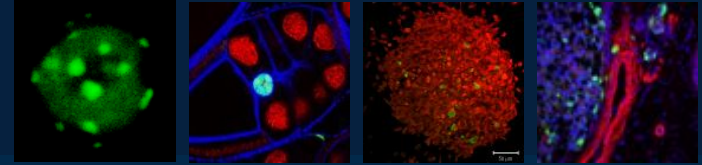
THINGS I NEED TO FIGURE OUT AS A SYSADMIN:

SCRIPT TO CHECK UPDATE REQUISITES?

LINKING ALIASES (IF DATA MOVE AFTER PUBLICATION OF LINKS)

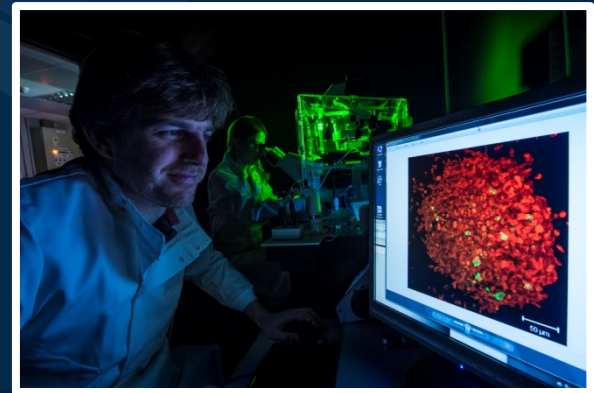
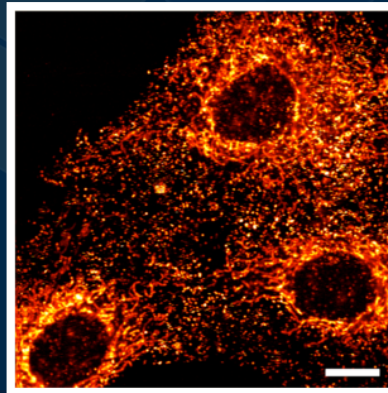
CENTRE FOR CELL IMAGING

A world-class resource for imaging at the University of Liverpool



DNMASON@LIV.AC.UK

CCI@LIV.AC.UK



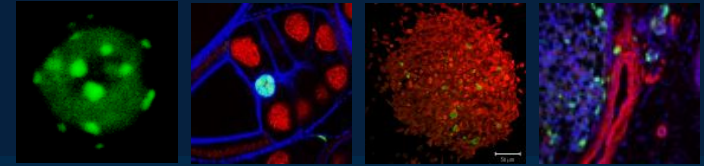
A TECHNOLOGY DIRECTORATE
SHARED RESEARCH FACILITY



UNIVERSITY OF
LIVERPOOL

CENTRE FOR CELL IMAGING

A world-class resource for imaging at the University of Liverpool



~460TB

SAMBA (FILE SERVER) & OMERO SIDE-BY-SIDE

ZEISS

JPK
Instruments

SXM

2D → 5D
MB → TB

A TECHNOLOGY DIRECTORATE
SHARED RESEARCH FACILITY



UNIVERSITY OF
LIVERPOOL