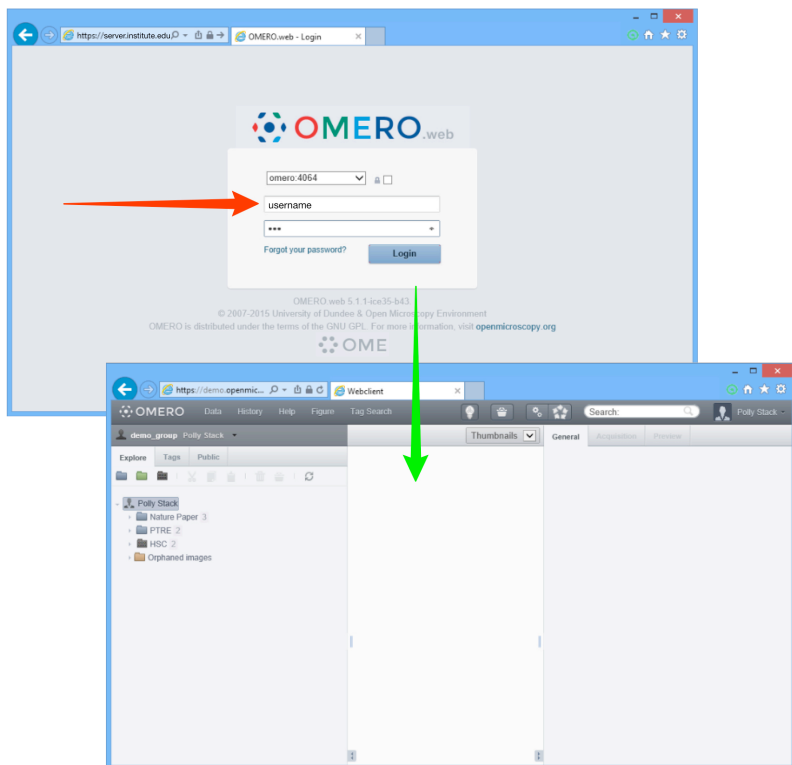


7 Use OMERO.web to view your data from any web browser. Your institute will have a unique OMERO.web URL in the form:

**servername.institute.edu**

OMERO.web uses the same login and has the same functionality as OMERO.insight, except OMERO.web cannot import data. Enter your OMERO username and password and click **Login**.



Detailed User Guides for common workflows using OMERO.insight and OMERO.web are available online and to download at:

**help.openmicroscopy.org**

For other questions or issues please use the forums and mailing lists at:

**openmicroscopy.org/site/community**

## Getting Started with OMERO.insight

Your institute has an OMERO server that allows you to store image data centrally. You can use the OMERO.insight client to upload, view and download data from any computer or laptop on or off-campus.

Your username, password and server address used to log into the OMERO server, are set by your institute, and can be obtained from your OMERO system administrator.

1 Download the OMERO.insight client for your operating system from:

**http://downloads.openmicroscopy.org/latest/omero5**



### OMERO 5.1.0 Downloads

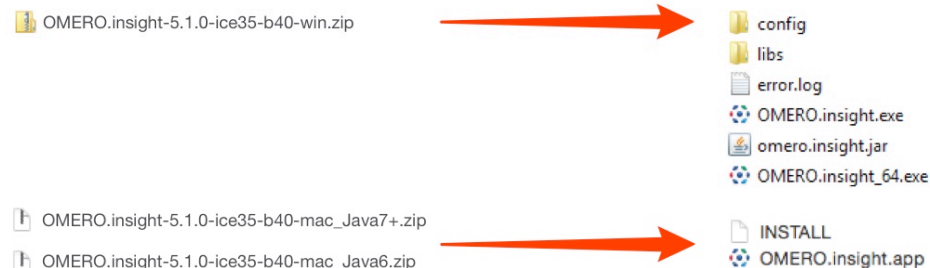
[Clients](#) | [Plugins](#) | [Additional](#) | [Servers](#) | [Virtual Appliance](#) | [API](#) | [Python](#) | [Java](#) | [Code](#) | [Components](#) | [Previous versions](#)

- Information on this release of OMERO is in the [release announcement](#)
- Full documentation is available as [web documentation](#) or [PDF documentation](#) and there are user guides for the clients on our [Help website](#)
- A standard OMERO user just needs to download the client package with the same major version as their institutional server e.g. 5.0 clients with the 5.0 server
- If you do not have an institutional server, you can apply for an [account on our Demo server](#) or download the [Virtual Appliance](#) to install your own version locally.

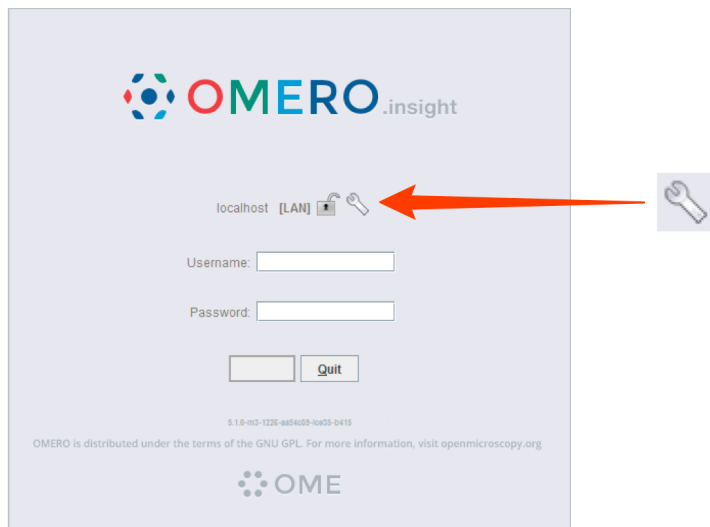
### OMERO client downloads

Clients	Size	File Name	Checksum
Windows	78.27 MB	OMERO.clients-5.1.0-ice35-b58.win.zip	96f2c6 (MDS)
Mac OS X (Java 7+)	229.66 MB	OMERO.clients-5.1.0-ice35-b210.mac.zip	06c5f8 (MDS)
Mac OS X (Java 6)	229.62 MB	OMERO.clients-5.1.0-ice35-b58.mac_Java6.zip	35c5a4 (MDS)
Linux	76.42 MB	OMERO.clients-5.1.0-ice35-b58.linux.zip	bb021f (MDS)

2 Expand the appropriate OMERO.insight client archive



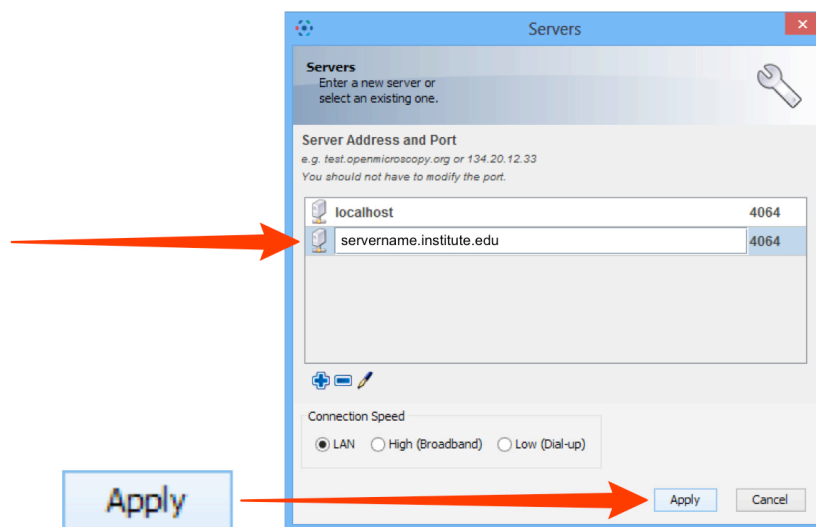
- 3 Open OMERO.insight client  
Click on the **Spanner** icon.



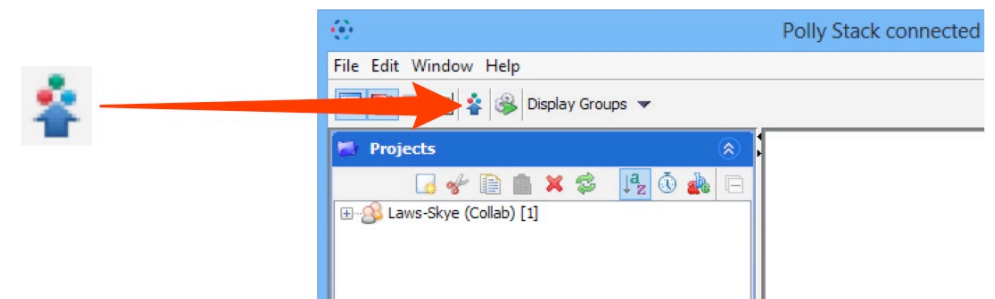
- 5 Enter your OMERO **Username** and **Password**  
Click on **Login**



- 4 In the **Add Server** dialogue box, click on the **+** icon.  
Enter the server address e.g.:  
**servername.institute.edu**  
Click on **Apply**.



- 6 Click on the **Importer** icon to add image data  
Using the file chooser in the Importer window select and queue data for import  
Use the location window to choose existing or create new Projects, Datasets or Screens to import the data into



**Note:** To import data from a networked drive on Macs, the drive must be mounted in the Finder first